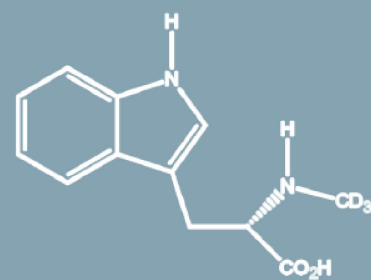




TOXICOLOGY

IsoSciences launched its toxicology product line. These compounds will be labeled with ^{13}C and ^{15}N allowing for the most accurate quantification.



Amphetamine-[13C6] Hydrochloride (Solution)

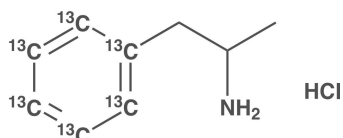
CATALOG #: S16012-0.05

CAS #: -

ISOTOPE: ≥98%

PURITY: ≥95%

1mL (50ug/mL)



Codeine Glucuronide-[13C10, 15N] (Solution)

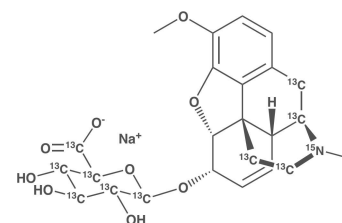
CATALOG #: S16110-0.05

CAS #: -

ISOTOPE: ≥98%

PURITY: ≥95%

1mL (50ug/mL)



Codeine-[13C3, 15N]

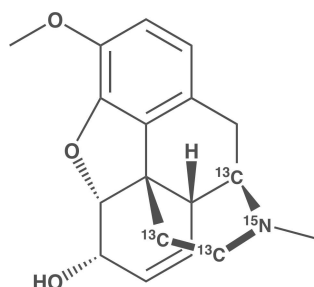
CATALOG #: S17047

CAS #: -

ISOTOPE: ≥98%

PURITY: ≥95%

1mL (50ug/mL)



Codeine-[13C4, 15N] (Solution)

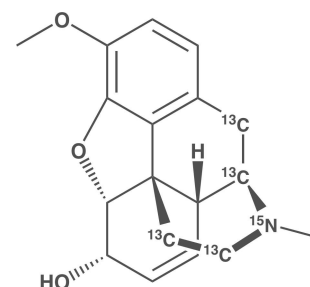
CATALOG #: S16108-0.05

CAS #: -

ISOTOPE: ≥98%

PURITY: ≥95%

1mL (50ug/mL)



Codeine-6β-[13C3, 15N] Glucuronide

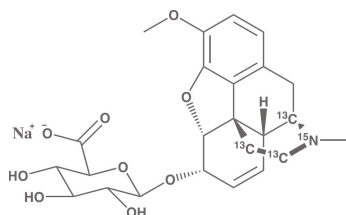
CATALOG #: S17048

CAS #: -

ISOTOPE: ≥98%

PURITY: ≥95%

1mL (50ug/mL)



Methamphetamine-[13C6] Hydrochloride (Solution)

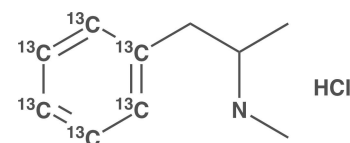
CATALOG #: S16013-0.05

CAS #: -

ISOTOPE: ≥98%

PURITY: ≥95%

1mL (50ug/mL)



(±)-3,4-Methylenedioxyamphetamine-[13C6] Hydrochloride (Solution)

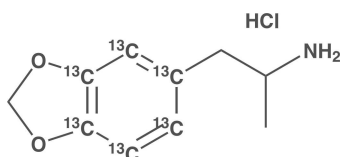
CATALOG #: S16014-0.05

CAS #: -

ISOTOPE: ≥98%

PURITY: ≥95%

1mL (50ug/mL)



(±)-3,4-Methylenedioxy-N-ethylamphetamine-[13C6] Hydrochloride (Solution)

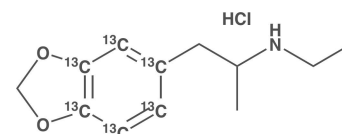
CATALOG #: S16015-0.05

CAS #: -

ISOTOPE: ≥98%

PURITY: ≥95%

1mL (50ug/mL)



TOXICOLOGY

Morphine Glucuronide-[13C10, 15N] (Solution)

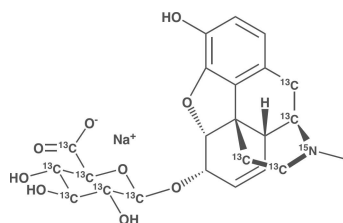
CATALOG #: S16109-0.05

CAS #: -

ISOTOPE: ≥98%

PURITY: ≥95%

1mL (50ug/mL)



Morphine-[13C3, 15N]

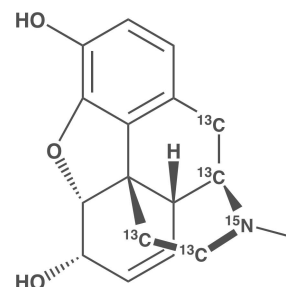
CATALOG #: S17050

CAS #: -

ISOTOPE: ≥98%

PURITY: ≥95%

1mL (50ug/mL)



Morphine-[13C4, 15N] (Solution)

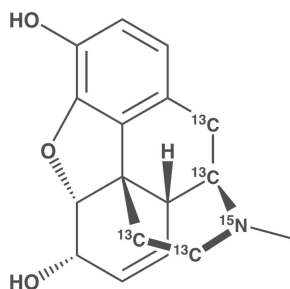
CATALOG #: S16107-0.05

CAS #: -

ISOTOPE: ≥98%

PURITY: ≥95%

1mL (50ug/mL)



Morphine-6β-[13C3, 15N] Glucuronide

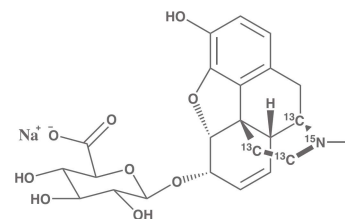
CATALOG #: S17051

CAS #: -

ISOTOPE: ≥98%

PURITY: ≥95%

1mL (50ug/mL)



Naltrexone-[13C3, 15N]

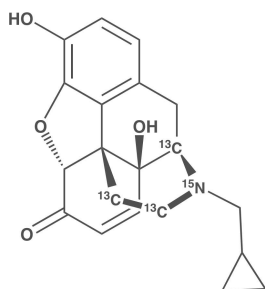
CATALOG #: S18009

CAS #: -

ISOTOPE: ≥98%

PURITY: ≥95%

1mL (50ug/mL)



Ricinine-[d3]

CATALOG #: 11035

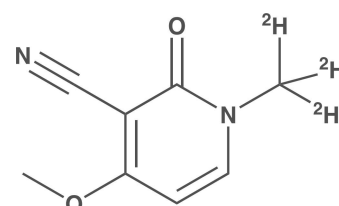
CAS #: 1313734-77-8

ISOTOPE: ≥98%

PURITY: ≥98%

2mg

5mg



Toxoflavin-[13C4]

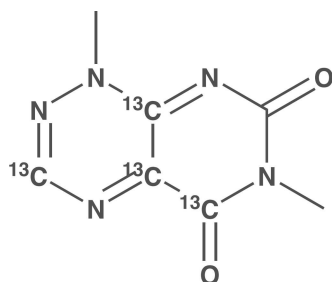
CATALOG #: 15397

CAS #: -

ISOTOPE: ≥98%

PURITY: ≥95%

1mg



BENZODIAZEPINES

Clobazam-[13C6]

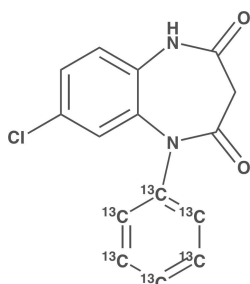
CATALOG #: S17147

CAS #: -

ISOTOPE: ≥98%

PURITY: ≥95%

1mL (50ug/mL)



Clonazepam-[13C6]

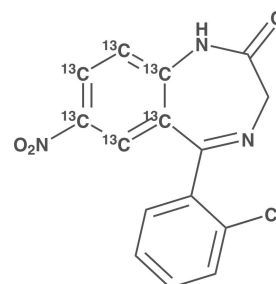
CATALOG #: S17148

CAS #: -

ISOTOPE: ≥98%

PURITY: ≥95%

1mL (50ug/mL)



Diazepam-[13C6]

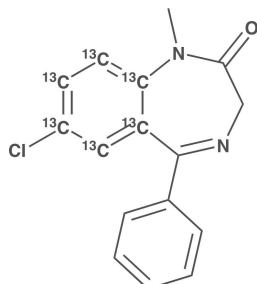
CATALOG #: S17149

CAS #: -

ISOTOPE: ≥98%

PURITY: ≥95%

1mL (50ug/mL)



Lorazepam-[13C6, 15N]

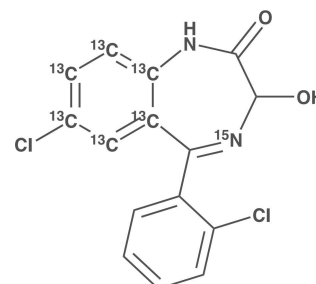
CATALOG #: S17153

CAS #: -

ISOTOPE: ≥98%

PURITY: ≥95%

1mL (50ug/mL)



Midazolam-[13C6]

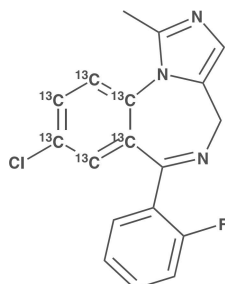
CATALOG #: S17154

CAS #: -

ISOTOPE: ≥98%

PURITY: ≥95%

1mL (50ug/mL)



Nordiazepam-[13C6]

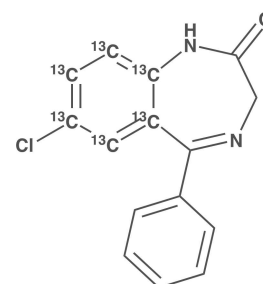
CATALOG #: S17156

CAS #: -

ISOTOPE: ≥98%

PURITY: ≥95%

1mL (50ug/mL)



Oxazepam-[13C6]

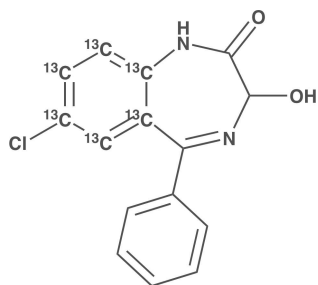
CATALOG #: S17158

CAS #: -

ISOTOPE: ≥98%

PURITY: ≥95%

1mL (50ug/mL)



Praxepam-[13C6]

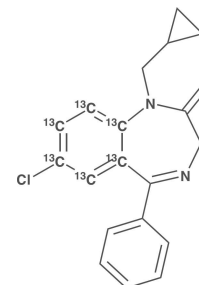
CATALOG #: S17159

CAS #: -

ISOTOPE: ≥98%

PURITY: ≥95%

1mL (50ug/mL)



BENZODIAZEPINES

Temazepam-[13C6]

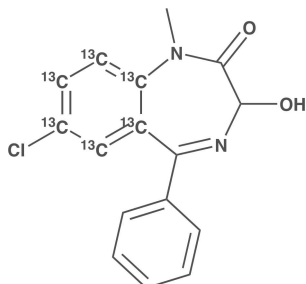
CATALOG #: S17160

CAS #: -

ISOTOPE: ≥98%

PURITY: ≥95%

1mL (50ug/mL)



Triazolam-[13C6]

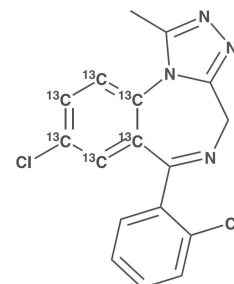
CATALOG #: S18040

CAS #: -

ISOTOPE: ≥98%

PURITY: ≥95%

1mL (50ug/mL)



Zolpidem-[13C2, 15N]

CATALOG #: S18044

CAS #: -

ISOTOPE: ≥98%

PURITY: ≥95%

1mL (50ug/mL)

