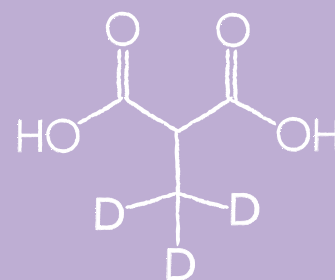




# CLINICAL DIAGNOSTICS

As the use of mass spectrometry in clinical chemistry continues to increase, so does IsoSciences's product list. From biogenic amines to drugs, IsoSciences can be your supplier of internal standards.



# CLINICAL DIAGNOSTICS

## BIOGENIC AMINES

### 3-Methoxytyramine Hydrochloride (3MT) (Solution)

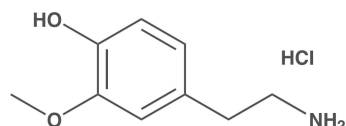
CATALOG #: S10417UNL-1.0

CAS #: 554-52-9

ISOTOPE: N/A

PURITY: ≥95%

Request a Quote



### 3-Methoxytyramine-[d4] Hydrochloride (3MT-[d4]) (Solution)

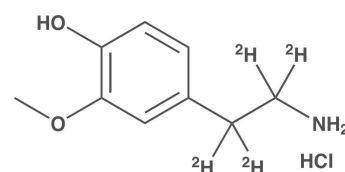
CATALOG #: S10417-0.1

CAS #: -

ISOTOPE: ≥98%

PURITY: ≥95%

Request a Quote



### Serotonin Creatinine Sulfate Complex (5-Hydroxytryptamine) (Solution)

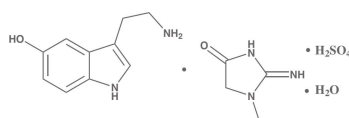
CATALOG #: S12354UNL-1.0

CAS #: 50-67-9

ISOTOPE: N/A

PURITY: ≥95%

Request a Quote



### Serotonin-[d4] Creatinine Sulfate Complex (5-Hydroxytryptamine) (Solution)

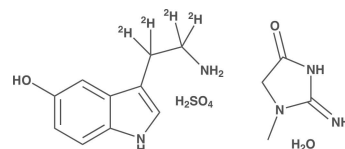
CATALOG #: S12354-0.1

CAS #: -

ISOTOPE: ≥98%

PURITY: ≥95%

Request a Quote



## CATECHOLAMINE

### Catechol (Solution)

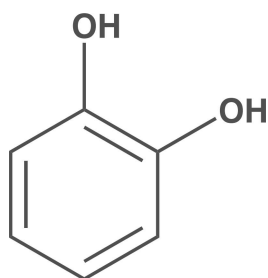
CATALOG #: S15017UNL-1.0

CAS #: 120-80-9

ISOTOPE: N/A

PURITY: ≥95%

Request a Quote



### Catechol-[d4] (Solution)

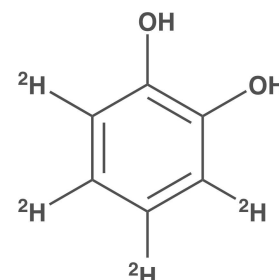
CATALOG #: S15017-0.1

CAS #: 103963-58-2

ISOTOPE: ≥98%

PURITY: ≥95%

Request a Quote



### Dopamine Hydrochloride (Solution)

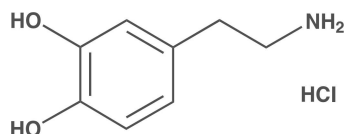
CATALOG #: S10399UNL-1.0

CAS #: -

ISOTOPE: N/A

PURITY: ≥95%

Request a Quote



### Dopamine-[13C6]

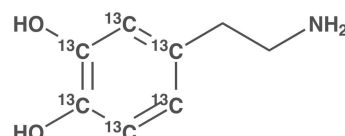
CATALOG #: 18019

CAS #: -

ISOTOPE: ≥98%

PURITY: ≥98%

1mg



# CLINICAL DIAGNOSTICS

## CATECHOLAMINE

### Dopamine-[d4] Hydrochloride (Solution)

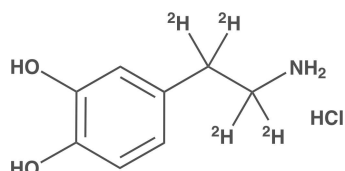
CATALOG #: S10399-0.1

CAS #: -

ISOTOPE:  $\geq 98\%$

PURITY:  $\geq 95\%$

1mL (100 ug/mL)



### Epinephrine Hydrochloride (Solution)

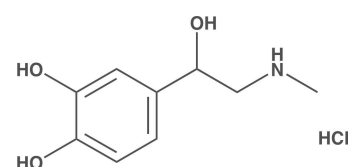
CATALOG #: S10400UNL-1.0

CAS #: 51-43-4

ISOTOPE: N/A

PURITY:  $\geq 95\%$

1mL (1mg/mL)



### Epinephrine-[d6] (Solution)

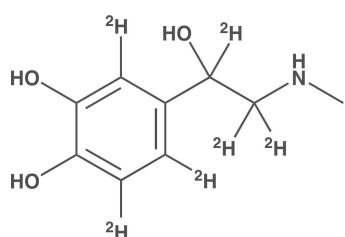
CATALOG #: S10400-0.1

CAS #: -

ISOTOPE:  $\geq 98\%$

PURITY:  $\geq 95\%$

Request a Quote



### Norepinephrine Hydrochloride (Solution)

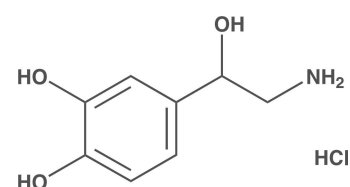
CATALOG #: S10401UNL-1.0

CAS #: 51-41-2

ISOTOPE: N/A

PURITY:  $\geq 95\%$

Request a Quote



### Norepinephrine-[d6] Hydrochloride (Solution)

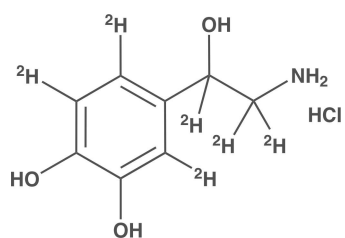
CATALOG #: S10401-0.1

CAS #: 1219908-83-4

ISOTOPE:  $\geq 98\%$

PURITY:  $\geq 95\%$

Request a Quote



## METABOLITES

### Dehydroepiandrosterone Glucuronide

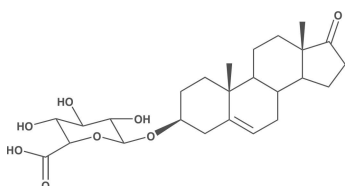
CATALOG #: S13395

CAS #: -

ISOTOPE: N/A

PURITY:  $\geq 97\%$

Request a Quote



### Dehydroepiandrosterone Sulfate Sodium Salt (Solution)

CATALOG #: S9180UNL

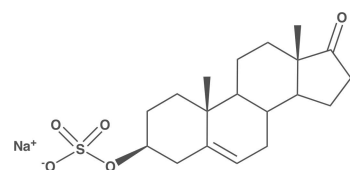
CAS #: -

ISOTOPE: N/A

PURITY:  $\geq 98\%$

1mL (100ug/mL)

1mL (1mg/mL)



# CLINICAL DIAGNOSTICS

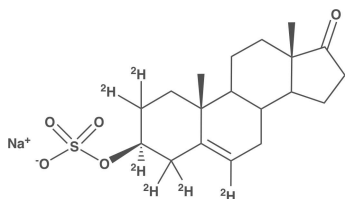
## METABOLITES

### Dehydroepiandrosterone-[d6] Sulfate Sodium Salt (Solution)

CATALOG #: S9180  
CAS #: 1261254-41-4

ISOTOPE:  $\geq 97\%$   
PURITY:  $\geq 98\%$

1mL (100ug/mL)

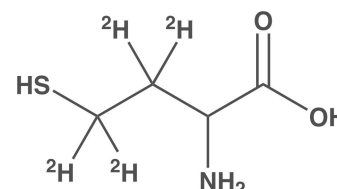


### DL-Homocysteine-[d4] (Solution)

CATALOG #: S14130  
CAS #: 416845-90-4

ISOTOPE:  $\geq 98\%$   
PURITY:  $\geq 95\%$

1mL (1mg/mL)

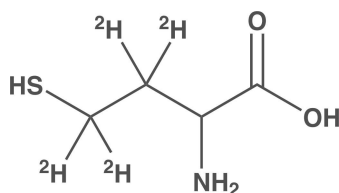


### Homocysteine-[d4]

CATALOG #: 14130  
CAS #: 416845-90-4

ISOTOPE:  $\geq 98\%$   
PURITY:  $\geq 95\%$

1mg

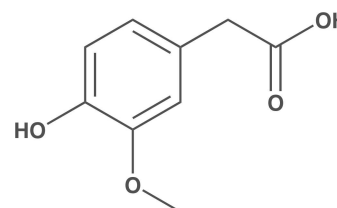


### Homovanillic Acid (HVA)

CATALOG #: S10413UNL-1.0  
CAS #: 306-08-1

ISOTOPE: N/A  
PURITY:  $\geq 95\%$

Request a Quote

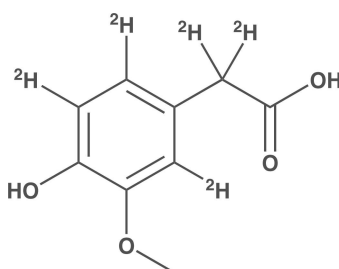


### Homovanillic Acid-[d5] (HVA-d5) (Solution)

CATALOG #: S10413-0.1  
CAS #: -

ISOTOPE:  $\geq 98\%$   
PURITY:  $\geq 95\%$

Request a Quote

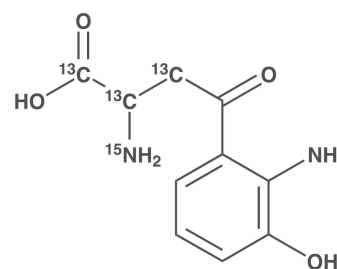


### 3-Hydroxy-DL-Kynurenine-[13C3,15N]

CATALOG #: 16263  
CAS #: -

ISOTOPE:  $\geq 98\%$   
PURITY:  $\geq 95\%$

1mg

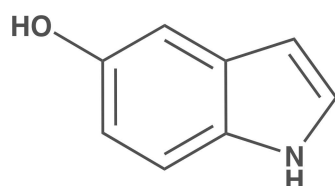


### 5-Hydroxyindole

CATALOG #: 11222UNL  
CAS #: 1953-54-4

ISOTOPE: N/A  
PURITY:  $\geq 98\%$

10mg

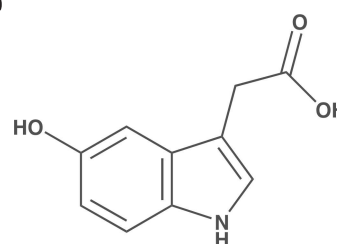


### 5-Hydroxyindoleacetic Acid (5HIAA) (Solution)

CATALOG #: S10412UNL-1.0  
CAS #: 54-16-0

ISOTOPE: N/A  
PURITY:  $\geq 95\%$

Request a Quote



## METABOLITES

### 5-Hydroxyindole-3-acetic Acid (Solution)

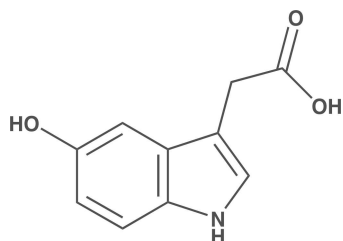
CATALOG #: S10412UNL-0.1

CAS #: 54-16-0

ISOTOPE: N/A

PURITY: ≥98%

[Request a Quote](#)



### 5-Hydroxyindoleacetic acid-[13C6]

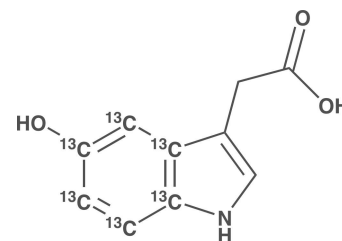
CATALOG #: 15215

CAS #: -

ISOTOPE: ≥98%

PURITY: ≥98%

[Request a Quote](#)



### 5-Hydroxyindoleacetic acid-[13C6] (Solution)

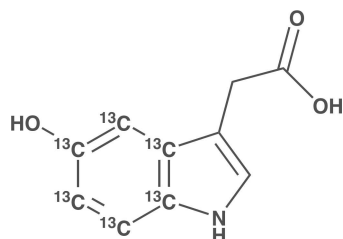
CATALOG #: S15215

CAS #: -

ISOTOPE: ≥98%

PURITY: ≥98%

1mL (100ug/mL)



### 5-Hydroxyindole-3-acetic Acid-[d2] (Solution)

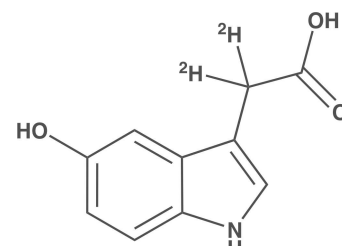
CATALOG #: S10412-0.1

CAS #: 56209-31-5

ISOTOPE: ≥98%

PURITY: ≥98%

[Request a Quote](#)



### 5-Hydroxyindole-[d5]

CATALOG #: 11222

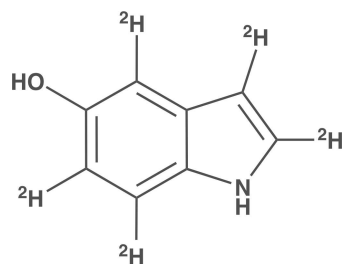
CAS #: 916979-23-2

ISOTOPE: ≥98%

PURITY: ≥98%

5mg

10mg



### (+)-4-Hydroxy-3-methoxymandelic Acid-d3 (ring-D3) (VMA-d3) (Solution)

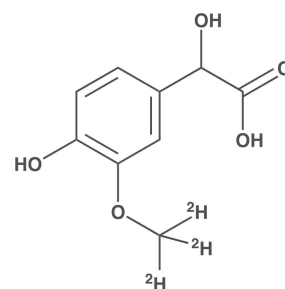
CATALOG #: S10411-0.1

CAS #: 74495-70-8

ISOTOPE: ≥98%

PURITY: ≥95%

[Request a Quote](#)



### 5-Hydroxytryptophan (Solution)

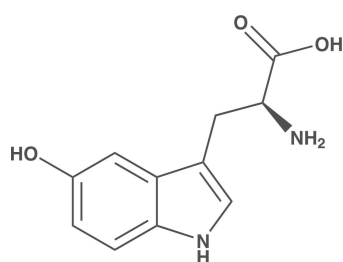
CATALOG #: S14371UNL-1.0

CAS #: -

ISOTOPE: N/A

PURITY: ≥98%

[Request a Quote](#)



### 5-Hydroxytryptophan-[d3]

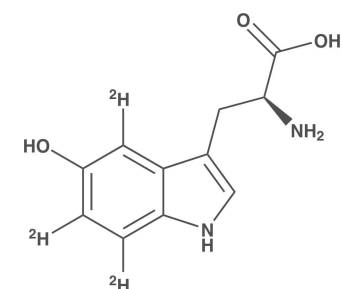
CATALOG #: S14371-0.1

CAS #: -

ISOTOPE: ≥98%

PURITY: ≥98%

[Request a Quote](#)



# CLINICAL DIAGNOSTICS

## METABOLITES

### *(±)-4-Hydroxy-3-methoxymandelic Acid (VMA)*

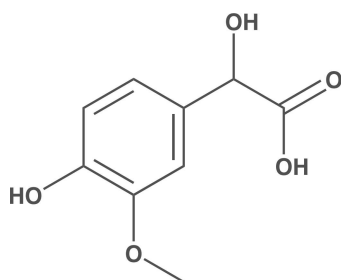
CATALOG #: S10411UNL-1.0

CAS #: -

ISOTOPE: N/A

PURITY: ≥95%

[Request a Quote](#)



### *Metanephrine Hydrochloride (Solution)*

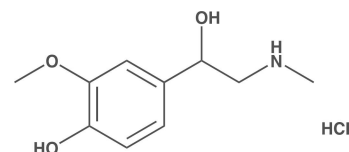
CATALOG #: S10415UNL-1.0

CAS #: -

ISOTOPE: N/A

PURITY: ≥95%

[Request a Quote](#)



### *Metanephrine-α,β,β-[d3] Hydrochloride (Solution)*

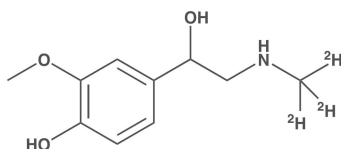
CATALOG #: S10415-0.1

CAS #: 1085333-94-3

ISOTOPE: ≥98%

PURITY: ≥98%

[Request a Quote](#)



### *Methyl-[d3] Malonic Acid*

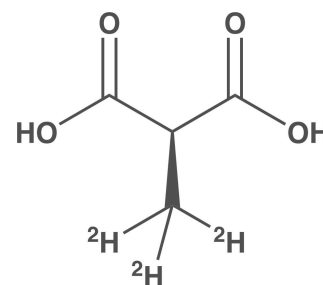
CATALOG #: 13018

CAS #: 42522-59-8

ISOTOPE: ≥98%

PURITY: ≥95%

1mg



### *Methylmalonic Acid-[d3] (Solution)*

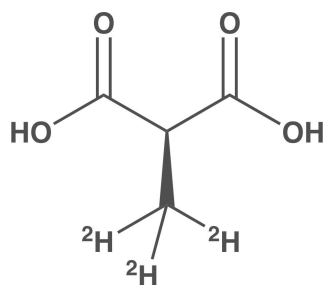
CATALOG #: S13018-1.0

CAS #: 42522-59-8

ISOTOPE: ≥98%

PURITY: ≥95%

[Request a Quote](#)



### *Normetanephrine Hydrochloride (Solution)*

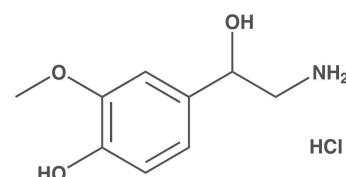
CATALOG #: S10416UNL-1.0

CAS #: -

ISOTOPE: N/A

PURITY: ≥95%

[Request a Quote](#)



### *Testosterone-[16,16,17-d3] Glucuronide*

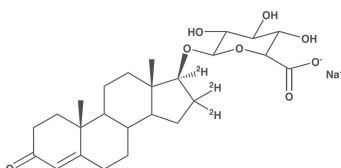
CATALOG #: 14038

CAS #: 384380-27-2

ISOTOPE: ≥98%

PURITY: ≥97%

[Request a Quote](#)



## OTHER

### Acetaminophen-[13C6]

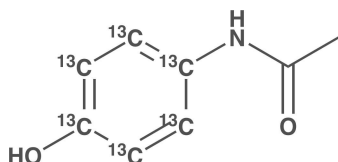
CATALOG #: 17170

CAS #: -

ISOTOPE: ≥98%

PURITY: ≥98%

1mg



### Barbituric Acid

CATALOG #: B2007072UNL

CAS #: 67-52-7

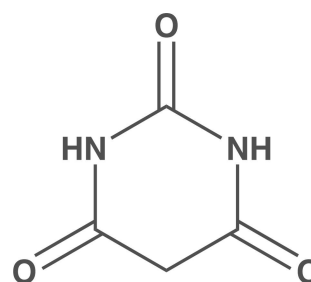
ISOTOPE: N/A

PURITY: ≥98%

1mg

5mg

10mg



### Barbituric Acid-[13C4,15N2]

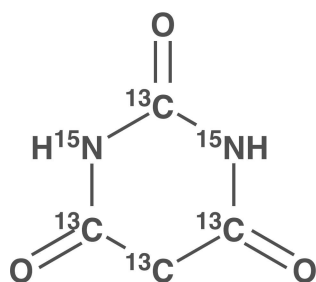
CATALOG #: B2007072

CAS #: 1173019-05-0

ISOTOPE: ≥98%

PURITY: ≥97%

Request a Quote



### Breviracetam-[d5] (Solution)

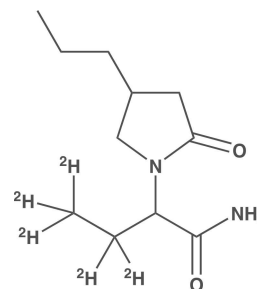
CATALOG #: S16166-0.1

CAS #: -

ISOTOPE: ≥98%

PURITY: ≥95%

1mL (100ug/mL)



### Carfentanil Precursor Sodium Salt

CATALOG #: 14356

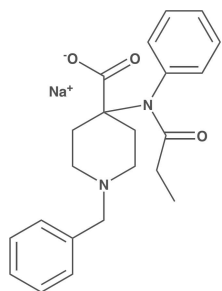
CAS #: 98598-82-4

ISOTOPE: N/A

PURITY: ≥95%

1mg

100mg



### Chlophedianol-[13C6]

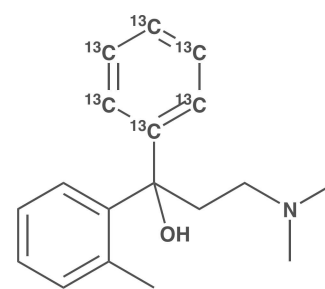
CATALOG #: 13420

CAS #: -

ISOTOPE: ≥99%

PURITY: ≥98%

1mg



### Choline-[13C3] Chloride

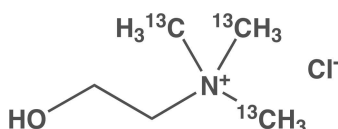
CATALOG #: 15341

CAS #: -

ISOTOPE: ≥98%

PURITY: ≥95%

1mg



### Choline-[13C2] Chloride (Solution)

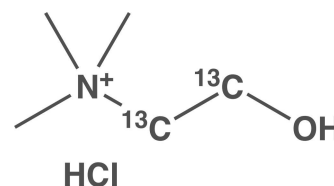
CATALOG #: S15242

CAS #: -

ISOTOPE: ≥98%

PURITY: ≥95%

1mL (1mg/mL)



# CLINICAL DIAGNOSTICS

## OTHER

### *cis-Urocanic Acid*

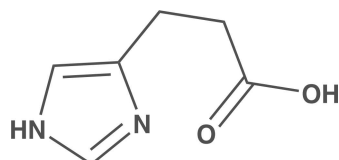
CATALOG #: 7057UNL

CAS #: 7699-35-6

ISOTOPE: N/A

PURITY: ≥98%

Request a Quote



### *cis-Urocanic Acid-[13C3]*

CATALOG #: 7057

CAS #: 1173097-34-1

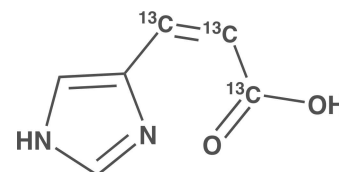
ISOTOPE: ≥99%

PURITY: ≥98%

1mg

2mg

5mg



### *Citric Acid (Solution)*

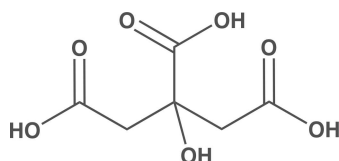
CATALOG #: S12323UNL-0.1

CAS #: 77-92-9

ISOTOPE: N/A

PURITY: ≥98%

Request a Quote



### *Citric Acid-[d4] (Solution)*

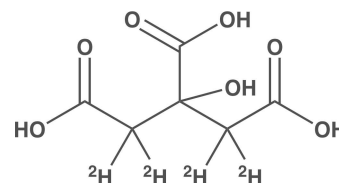
CATALOG #: S12323-0.1

CAS #: 147664-83-3

ISOTOPE: ≥98%

PURITY: ≥98%

Request a Quote



### *Cytosine-[13C2, 15N3]*

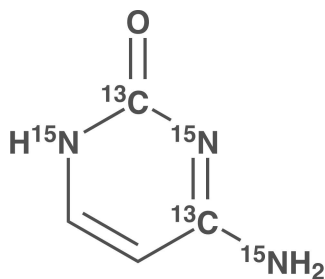
CATALOG #: 14194

CAS #: 285978-06-5

ISOTOPE: ≥98%

PURITY: ≥95%

Request a Quote



### *Dermatan-[d6] Sulfate (Solution)*

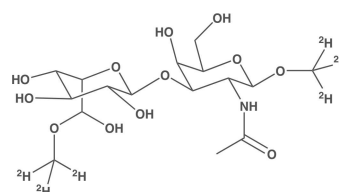
CATALOG #: S16123-0.3

CAS #: -

ISOTOPE: N/A

PURITY: N/A

Request a Quote



### *Desethylamodiaquine*

CATALOG #: 5060UNL

CAS #: -

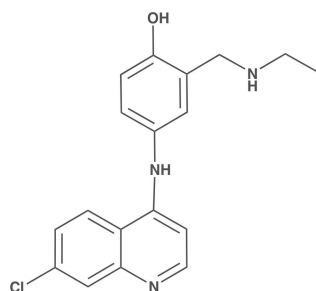
ISOTOPE: N/A

PURITY: ≥98%

1mg

5mg

10mg



### *Desethylamodiaquine-[d5]*

CATALOG #: 5060

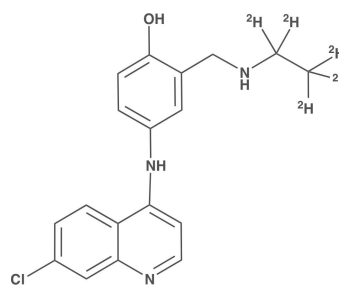
CAS #: 11730223-19-2

ISOTOPE: ≥97%

PURITY: ≥98%

2mg

5mg





## OTHER

### 3,5-Dichloro-L-tyrosine-[13C9, 15N] Hydrochloride

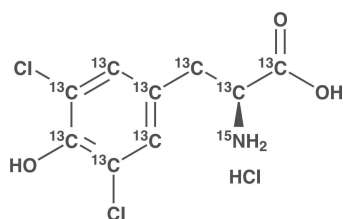
CATALOG #: 14208

CAS #: -

ISOTOPE: ≥98%

PURITY: ≥95%

1mg



### 1,3-Dilinoleoyl glycerol-[13C3] (Solution)

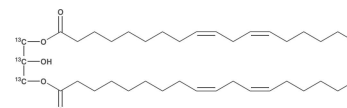
CATALOG #: S15243

CAS #: -

ISOTOPE: ≥98%

PURITY: ≥95%

1mL (1mg/mL)



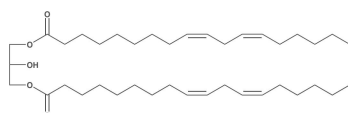
### 1,3-Dilinoleoyl-rac-glycerol

CATALOG #: S14372UNL-1.0

CAS #: 15818-46-9

ISOTOPE: N/A

PURITY: ≥98%



### 1,3-Dilinoleoyl-rac-glycerol-[d5] (Solution)

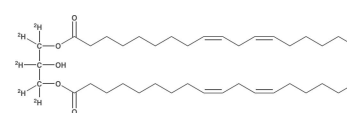
CATALOG #: S14372-1.0

CAS #: 15818-46-9

ISOTOPE: ≥98%

PURITY: ≥98%

1mL (1mg/mL)



### 5,6-Dimethylbenzimidazole-[13C7]

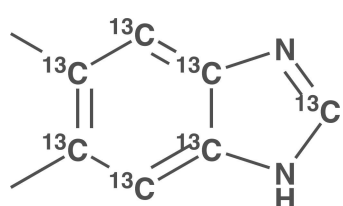
CATALOG #: 13422

CAS #: 582-60-5

ISOTOPE: ≥99%

PURITY: ≥98%

Request a Quote



### Doxycycline-[d5] Hyclate

CATALOG #: 15366

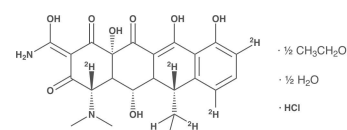
CAS #: -

ISOTOPE: ≥95%

PURITY: ≥95%

1mg

10mg



### Efavirenz-[13C6]

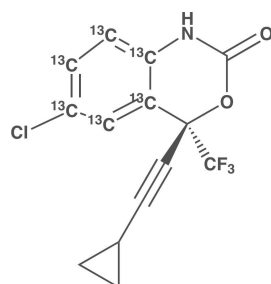
CATALOG #: 13218

CAS #: 1261394-62-0

ISOTOPE: ≥99%

PURITY: ≥98%

1mg



### Etiracetam-[d3] (Racemate)

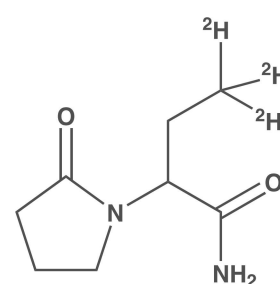
CATALOG #: 15396

CAS #: -

ISOTOPE: ≥99%

PURITY: ≥98%

1mg



# CLINICAL DIAGNOSTICS

## OTHER

### Fenoprofen-[13C6] Sodium Salt Hydrate

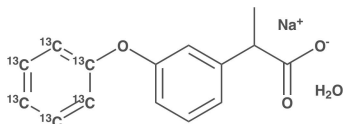
CATALOG #: 16167

CAS #: -

ISOTOPE: ≥99%

PURITY: ≥98%

1mg



### Ferulic acid-[13C3]

CATALOG #: 9114

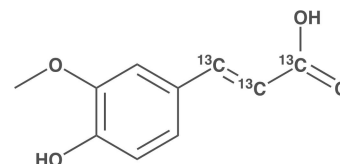
CAS #: 1261170-81-3

ISOTOPE: ≥99%

PURITY: ≥98%

1 mg

5 mg



### Gabapentin-[13C3]

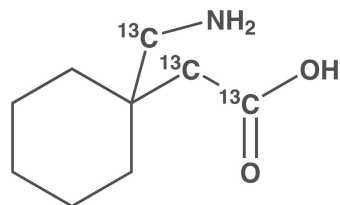
CATALOG #: 14344

CAS #: -

ISOTOPE: ≥98%

PURITY: ≥95%

1mg **Request a Quote**



### gamma-Butyrolactone-[13C2] (Solution)

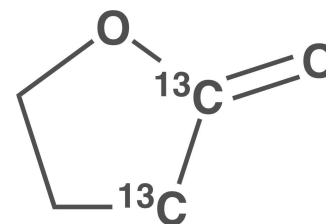
CATALOG #: S15241

CAS #: -

ISOTOPE: ≥98%

PURITY: ≥95%

1mL (1mg/mL)



### gamma-Butyrolactone-[13C4] (Solution)

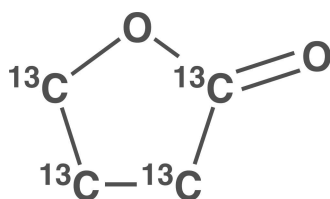
CATALOG #: S15081-1.0

CAS #: 848486-92-0

ISOTOPE: ≥98%

PURITY: ≥95%

1mL (1mg/mL)



### gamma-Butyrolactone-[d6]

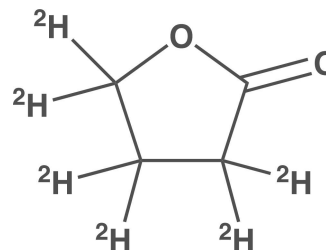
CATALOG #: S14373-1.0

CAS #: -

ISOTOPE: ≥98%

PURITY: ≥95%

1mL (1mg/mL)



### Glycylglycine-[13C4] (Solution)

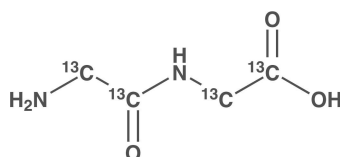
CATALOG #: S14494-1.0

CAS #: -

ISOTOPE: ≥99%

PURITY: ≥98%

**Request a Quote**



### Heparan-[d6] Sulfate (Solution)

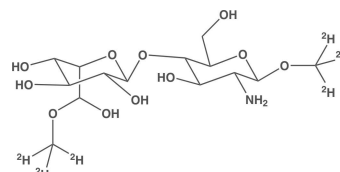
CATALOG #: S16124-0.3

CAS #: -

ISOTOPE: N/A

PURITY: N/A

300ug/mL **Request a Quote**



## OTHER

### Hexadecanoic Acid-[d4]

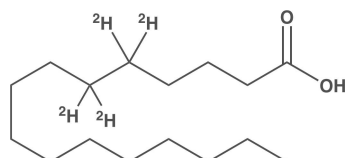
CATALOG #: S14415-1.0

CAS #: 75736-49-1

ISOTOPE: ≥98%

PURITY: ≥95%

1mL (1mg/mL)



### Hexanedioic Acid-[d4] (Solution)

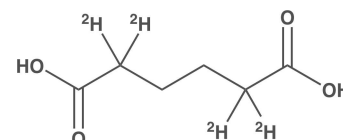
CATALOG #: S14414-1.0

CAS #: -

ISOTOPE: ≥98%

PURITY: ≥95%

1mL (1mg/mL)



### Hexanedioic Acid-[d8] (Solution)

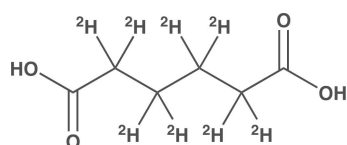
CATALOG #: S15239

CAS #: -

ISOTOPE: ≥98%

PURITY: ≥95%

1mL (1mg/mL)



### Hippuric Acid-[13C6]

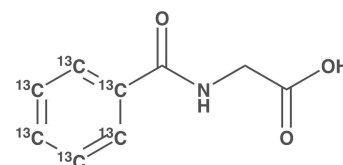
CATALOG #: 9117

CAS #: 1163160-18-6

ISOTOPE: ≥99%

PURITY: ≥98%

Request a Quote



### 2-Hydroxybutyrate-[d3] Sodium Salt (Solution)

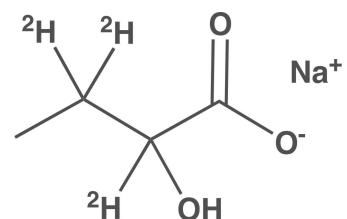
CATALOG #: S15240

CAS #: -

ISOTOPE: ≥98%

PURITY: ≥95%

1mL (1mg/mL)



### Indoxyl Sulfate-[13C6] Potassium Salt

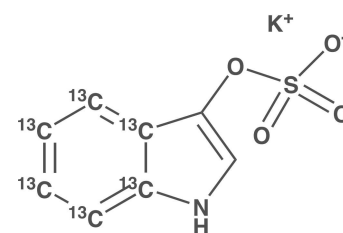
CATALOG #: 14222

CAS #: -

ISOTOPE: ≥99%

PURITY: ≥95%

1mg



### Iopromide

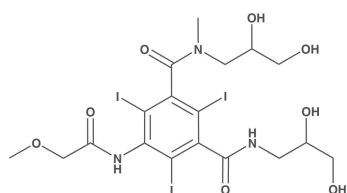
CATALOG #: 7158UNL

CAS #: 73334-07-3

ISOTOPE: N/A

PURITY: ≥98%

1mg



### Iopromide-[d3]

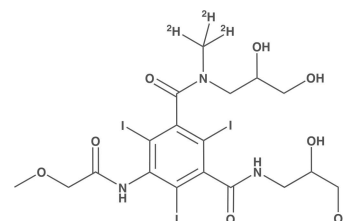
CATALOG #: 7158

CAS #: 1189947-73-6

ISOTOPE: ≥98%

PURITY: ≥98%

1mg



# CLINICAL DIAGNOSTICS

## OTHER

### Kevetrin-[13C2, 15N3] Hydrochloride

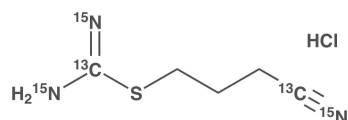
CATALOG #: 16247

CAS #: -

ISOTOPE: ≥98%

PURITY: ≥95%

1mg



### L-Abrine-[d3]

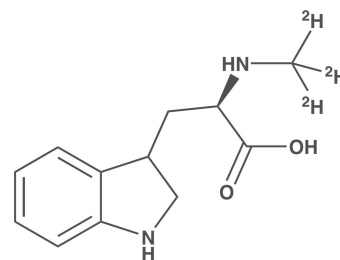
CATALOG #: 11036

CAS #: -

ISOTOPE: ≥98%

PURITY: ≥98%

Request a Quote



### L-Methionine-[13C5]

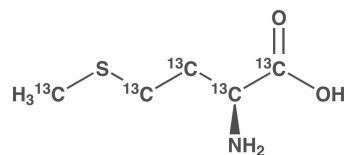
CATALOG #: S14409-1.0

CAS #: -

ISOTOPE: ≥98%

PURITY: ≥95%

Request a Quote



### m-Coumaric acid-[13C3]

CATALOG #: 9116

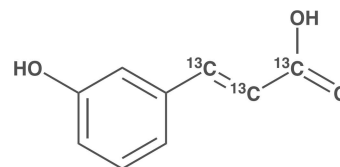
CAS #: 1261170-79-9

ISOTOPE: ≥99%

PURITY: ≥99%

1mg

5mg



### Mecamylamine Hydrochloride

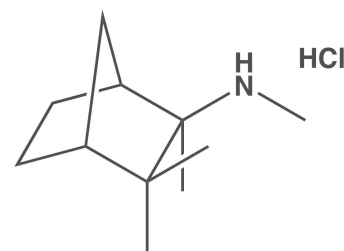
CATALOG #: 10092UNL

CAS #: 826-39-1

ISOTOPE: N/A

PURITY: ≥98%

1 mg



### Mecamylamine-[13C4,15N] Hydrochloride

CATALOG #: 10092

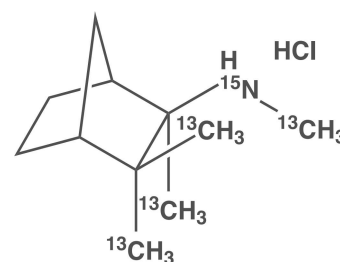
CAS #: 826-39-1

ISOTOPE: ≥98%

PURITY: ≥98%

1mg

10mg



### 2-Methylglutaric Acid (Solution)

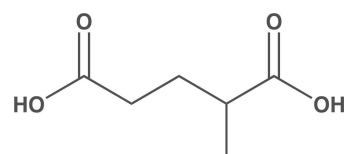
CATALOG #: S16287UNL-1.0

CAS #: 18069-17-5

ISOTOPE: N/A

PURITY: ≥95%

1mL (1mg/mL)



### 2-Methylglutaric Acid-[13C2]

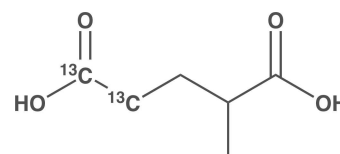
CATALOG #: 16287

CAS #: -

ISOTOPE: ≥98%

PURITY: ≥95%

Request a Quote



## OTHER

### 2-Methylglutaric Acid-[13C2]

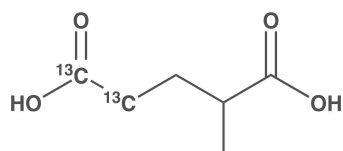
CATALOG #: S16287

CAS #: -

ISOTOPE: ≥98%

PURITY: ≥95%

1mL (1mg/mL)



### 2-Methylglutaric Acid-[13C2] (Solution)

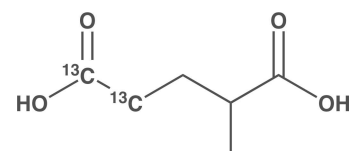
CATALOG #: S16287-1.0

CAS #: -

ISOTOPE: ≥98%

PURITY: ≥95%

1mL (1mg/mL)



### 3-Methylglutaric Acid-[d4]

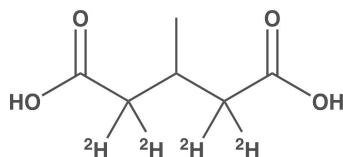
CATALOG #: S14413-1.0

CAS #: -

ISOTOPE: ≥98%

PURITY: ≥95%

1mL (1mg/mL)



### Methylthioadenosine-[13C6]

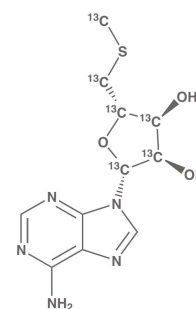
CATALOG #: 17087

CAS #: -

ISOTOPE: ≥98%

PURITY: ≥95%

1mg Request a Quote



### Moricizine-[d8] Hydrochloride

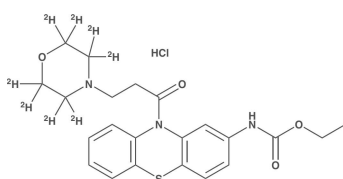
CATALOG #: 16113

CAS #: -

ISOTOPE: ≥98%

PURITY: ≥95%

1mg



### 2-Oxovaleric Acid-[d7] (Solution)

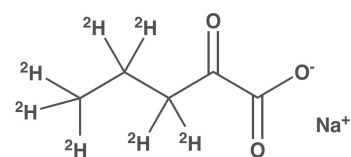
CATALOG #: S14390-0.1

CAS #: -

ISOTOPE: N/A

PURITY: ≥98%

1mL (100 ug/mL)



### Paclitaxel

CATALOG #: 8112UNL

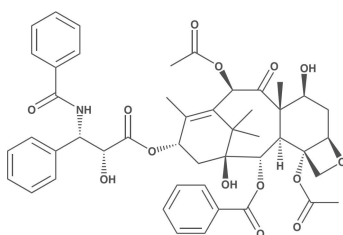
CAS #: 33069-62-4

ISOTOPE: N/A

PURITY: ≥95%

1mg

5mg



### Paclitaxel-[d5]

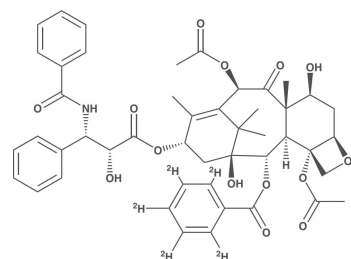
CATALOG #: 8112

CAS #: 1261254-56-1

ISOTOPE: ≥98%

PURITY: ≥97%

Request a Quote



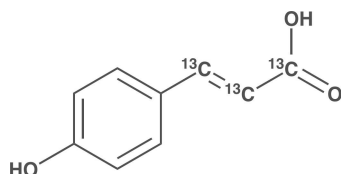
## OTHER

### *p*-Coumaric acid-[13C3]

**CATALOG #:** 9115  
**CAS #:** 1261170-80-2

**ISOTOPE:** ≥99%  
**PURITY:** ≥99%

1mg  
5mg

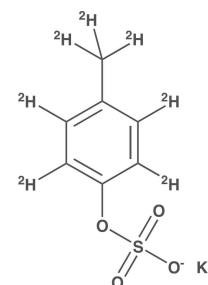


### *p*-Cresol Sulfate-[d7] Potassium Salt (*p*-Tolyl Sulfate-[d7] Potassium Salt)

**CATALOG #:** 12303  
**CAS #:** 91978-69-7

**ISOTOPE:** ≥98%  
**PURITY:** ≥95%

10mg

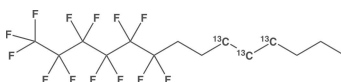


### Perfluorohexyloctane-[13C3]

**CATALOG #:** 16076  
**CAS #:** -

**ISOTOPE:** ≥98%  
**PURITY:** ≥95%

**Request a Quote**

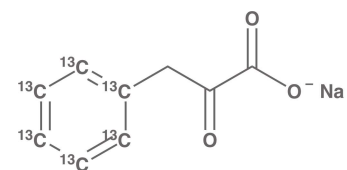


### Phenylpyruvate-[13C6] Sodium Salte

**CATALOG #:** 17099  
**CAS #:** -

**ISOTOPE:** ≥98%  
**PURITY:** ≥95%

1mg

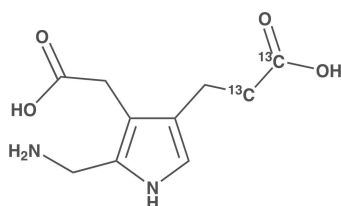


### Porphobilinogen-[13C2]

**CATALOG #:** 16111  
**CAS #:** -

**ISOTOPE:** ≥99%  
**PURITY:** ≥95%

1mg

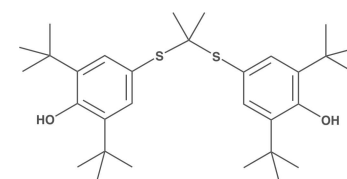


### Probucol

**CATALOG #:** 4032UNL  
**CAS #:** 23288-49-5

**ISOTOPE:** N/A  
**PURITY:** ≥96%

1mg  
5mg  
10mg

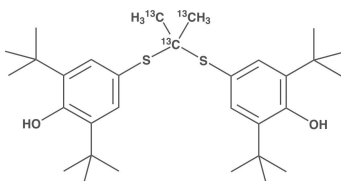


### Probucol-[13C3]

**CATALOG #:** 4032  
**CAS #:** 1173019-29-8

**ISOTOPE:** ≥99%  
**PURITY:** ≥96%

10mg  
50mg

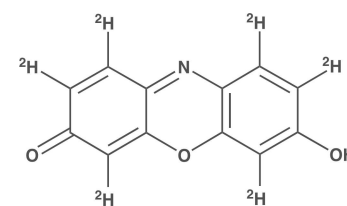


### Resorufin-[d6]

**CATALOG #:** 6166  
**CAS #:** 1196157-65-9

**ISOTOPE:** ≥98%  
**PURITY:** ≥96%

10mg  
50mg



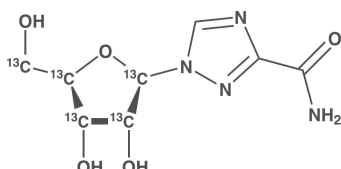
## OTHER

### Ribavirin-[13C5]

CATALOG #: 17091  
CAS #: 1646818-35-0

ISOTOPE: ≥98%  
PURITY: ≥95%

1mg

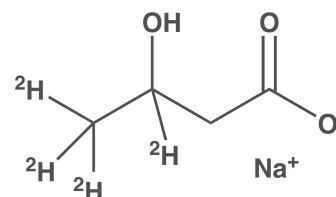


### Sodium (+-) 3-Hydroxybutyrate-[d4]

CATALOG #: 16154  
CAS #: 1219804-68-8

ISOTOPE: ≥98%  
PURITY: ≥95%

Request a Quote

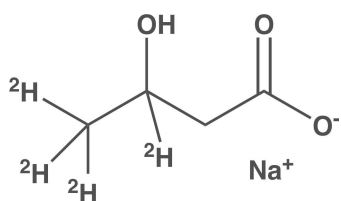


### Sodium (+-) 3-Hydroxybutyrate-[d4] (Solution)

CATALOG #: S16154-1.0  
CAS #: 1219804-68-8

ISOTOPE: ≥98%  
PURITY: ≥95%

1mL (1mg/mL)

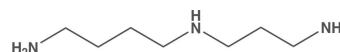


### Spermidine

CATALOG #: 9043UNL  
CAS #: 124-20-9

ISOTOPE: N/A  
PURITY: ≥95%

1mg  
5mg  
10mg

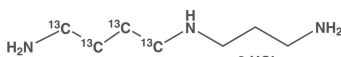


### Spermidine-[13C4] Trihydrochloride

CATALOG #: 10326  
CAS #: 1313734-84-7

ISOTOPE: ≥99%  
PURITY: ≥95%

5mg  
10mg

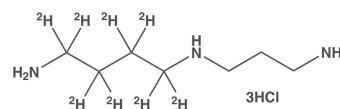


### Spermidine-[d8] Trihydrochloride

CATALOG #: 9043  
CAS #: 1173019-26-5

ISOTOPE: ≥98%  
PURITY: ≥95%

5mg  
10mg  
50mg

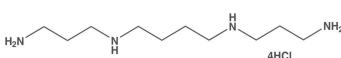


### Spermine Tetrahydrochloride

CATALOG #: 7095UNL  
CAS #: 306-67-2

ISOTOPE: N/A  
PURITY: ≥95%

1mg  
5mg  
10mg



### Spermine-[d8] Tetrahydrochloride

CATALOG #: 7095  
CAS #: 1173022-85-9

ISOTOPE: ≥97%  
PURITY: ≥95%

5mg  
10mg



# CLINICAL DIAGNOSTICS

## OTHER

### 6-Thioguanine

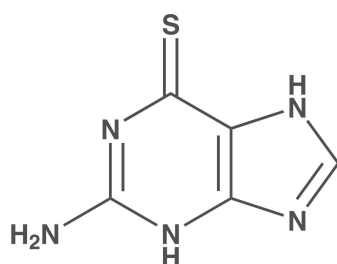
CATALOG #: 13341

CAS #: 154-42-7

ISOTOPE: N/A

PURITY: ≥95%

1mg [Request a Quote](#)



### Tolbutamide-[13C]

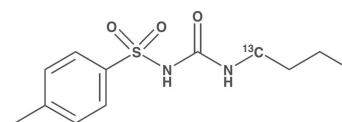
CATALOG #: 16083

CAS #: -

ISOTOPE: ≥99%

PURITY: ≥98%

1mg



### Tonabersat-[d6]

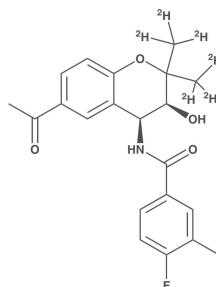
CATALOG #: 13349

CAS #: -

ISOTOPE: ≥98%

PURITY: ≥95%

[Request a Quote](#)



### Trimethylolpropane Phosphate-[13C3]

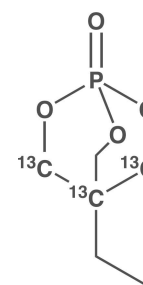
CATALOG #: 15223

CAS #: -

ISOTOPE: ≥99%

PURITY: ≥95%

1mg



### Yohimbine-[13C,d3]

CATALOG #: 10075

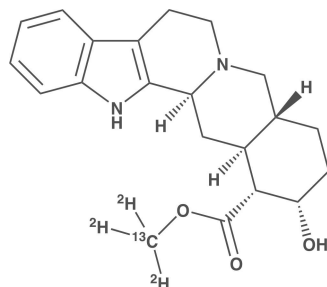
CAS #: 1261254-59-4

ISOTOPE: ≥99%

PURITY: ≥98%

5mg

10mg



### β-aminomethyl-L-alanine-[13C,15N2] dihydrochloride

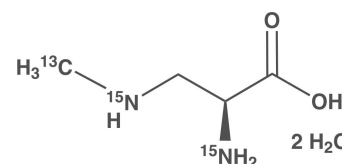
CATALOG #: 15264

CAS #: -

ISOTOPE: ≥99%

PURITY: ≥95%

1mg



## THIOPURINES

### 2-Amino-6-methylmercaptapurine

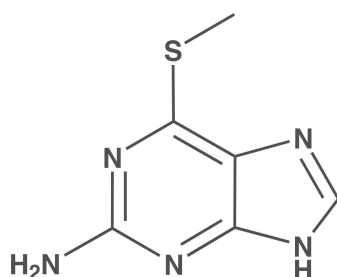
CATALOG #: S12038UNL-1.0

CAS #: 1198-47-6

ISOTOPE: N/A

PURITY: ≥98%

[Request a Quote](#)



### 2-Amino-6-methylmercaptapurine-[13C, d3] (Solution)

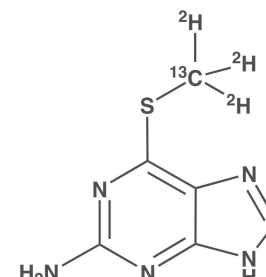
CATALOG #: S12038-1.0

CAS #: 1198-47-6

ISOTOPE: ≥98%

PURITY: ≥98%

[Request a Quote](#)





## THIOPURINES

### 6-Mercaptopurine Monohydrate

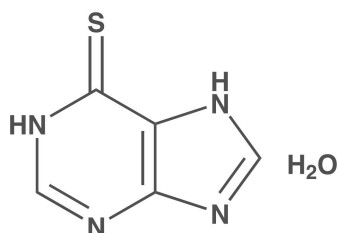
CATALOG #: 14450

CAS #: 6112-76-1

ISOTOPE: N/A

PURITY: ≥98%

Request a Quote



### 6-Methylmercaptopurine

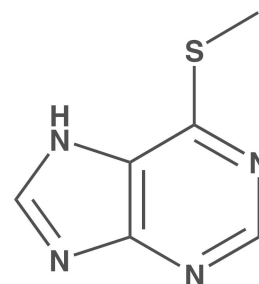
CATALOG #: 12281UNL

CAS #: -

ISOTOPE: N/A

PURITY: ≥98%

1mg



### 6-Methylmercaptopurine (Solution)

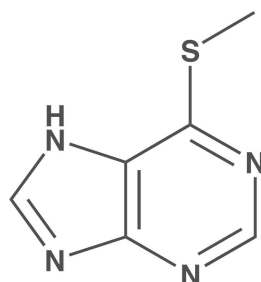
CATALOG #: S12281UNL-1.0

CAS #: -

ISOTOPE: N/A

PURITY: ≥98%

Request a Quote



### 6-Methylmercaptopurine-[13C, d3] (Solution)

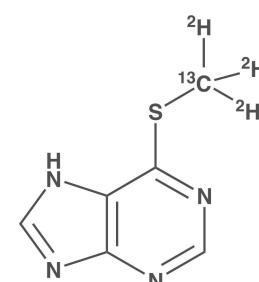
CATALOG #: S12281-1.0

CAS #: -

ISOTOPE: ≥98%

PURITY: ≥98%

Request a Quote



### 6-Methylmercaptopurine-[13C,d3]

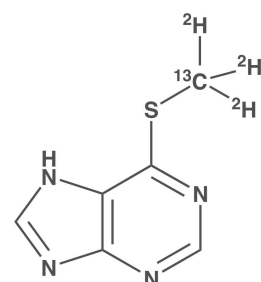
CATALOG #: 12281

CAS #: -

ISOTOPE: ≥98%

PURITY: ≥98%

1mg



### 6-Methylthioguanine-[13C,d3]

CATALOG #: 12174

CAS #: -

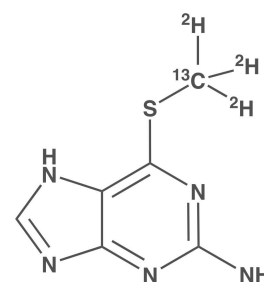
ISOTOPE: ≥98%

PURITY: ≥97%

10mg

50mg

100mg



### 6-Methylthioguanine-[13C,d3] (Solution)

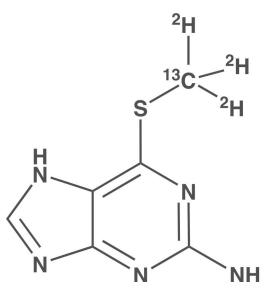
CATALOG #: S12174

CAS #: -

ISOTOPE: ≥98%

PURITY: ≥97%

Request a Quote



### 2-Methylthiopurine-[13C, d3]

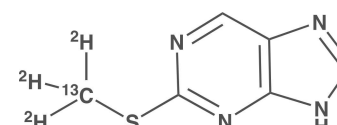
CATALOG #: 16228

CAS #: -

ISOTOPE: ≥98%

PURITY: ≥98%

1mg



## THIOPURINES

### 6-Thioguanine

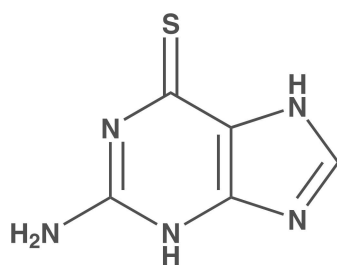
CATALOG #: S13341-1.0

CAS #: 154-42-7

ISOTOPE: N/A

PURITY: ≥98%

**Request a Quote**



### 6-Thioguanine (Solution)

CATALOG #: S13341-0.1

CAS #: 154-42-7

ISOTOPE: N/A

PURITY: ≥98%

**Request a Quote**

