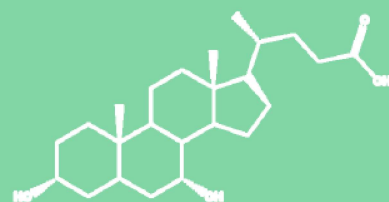




BILE ACIDS

IsoSciences offers multiple isotopically labeled variations of bile acids to allow easy differentiation of isomers. Deuterated products include primary, secondary and conjugated bile acids.



BILE ACIDS

PRIMARY BILE ACIDS

Chenodeoxycholic Acid

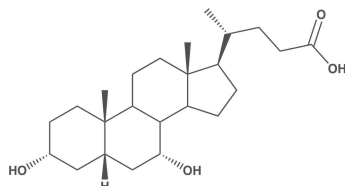
CATALOG #: 13101UNL

CAS #: 474-25-9

ISOTOPE: N/A

PURITY: ≥98%

50mg



Chenodeoxycholic Acid-[d4]

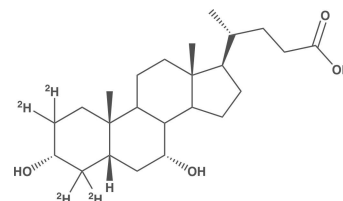
CATALOG #: 13101

CAS #: 99102-69-9

ISOTOPE: ≥98%

PURITY: ≥98%

50mg



Chenodeoxycholic Acid-[d9]

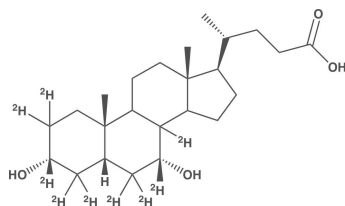
CATALOG #: 13103

CAS #: 474-25-9

ISOTOPE: ≥98%

PURITY: ≥98%

10mg



Chenodeoxycholic Acid-[d4] (Solution)

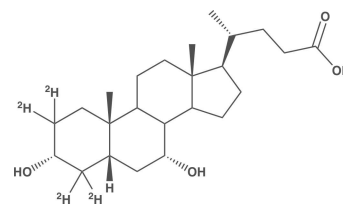
CATALOG #: S13101-0.1

CAS #: 99102-69-9

ISOTOPE: ≥98%

PURITY: ≥98%

1mL (100ug/mL)



Chenodeoxycholic Acid-[d9] (Solution)

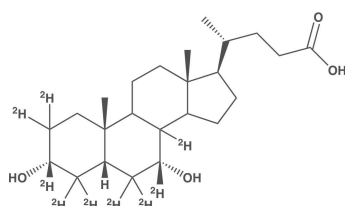
CATALOG #: S13103-0.1

CAS #: -

ISOTOPE: ≥98%

PURITY: ≥98%

1mL (100ug/mL)



Cholic Acid

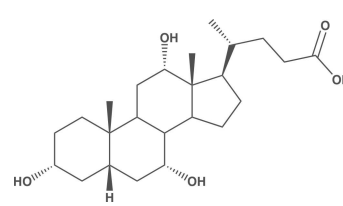
CATALOG #: 13098UNL

CAS #: 81-25-4

ISOTOPE: N/A

PURITY: ≥98%

50mg



Cholic Acid -[d4] (Solution)

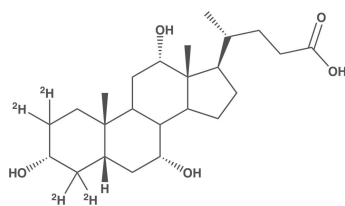
CATALOG #: S13098-0.1

CAS #: 116380-66-6

ISOTOPE: ≥98%

PURITY: ≥98%

1mL (100ug/mL)



Cholic Acid-[d4]

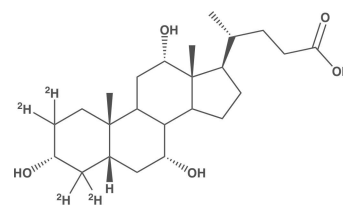
CATALOG #: 13098

CAS #: 116380-66-6

ISOTOPE: ≥98%

PURITY: ≥98%

50mg



SECONDARY BILE ACIDS

Deoxycholic Acid

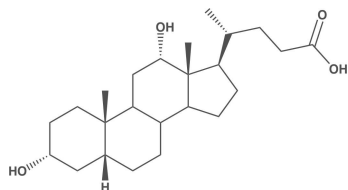
CATALOG #: 13100UNL

CAS #: 83-44-3

ISOTOPE: N/A

PURITY: ≥98%

50mg



Deoxycholic Acid-[d4]

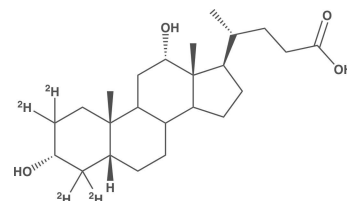
CATALOG #: 13100

CAS #: 112076-61-6

ISOTOPE: ≥98%

PURITY: ≥98%

10mg



Deoxycholic Acid-[d6]

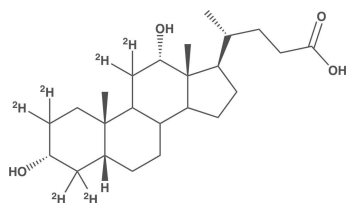
CATALOG #: 13227

CAS #: -

ISOTOPE: ≥98%

PURITY: ≥98%

10mg



Deoxycholic Acid-[d4] (Solution)

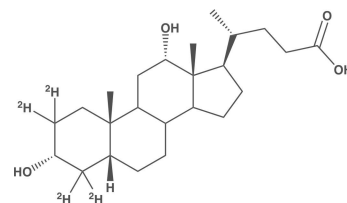
CATALOG #: S13100-0.1

CAS #: 112076-61-6

ISOTOPE: ≥98%

PURITY: ≥98%

1mL (100ug/mL)



Deoxycholic Acid-[d6] (Solution)

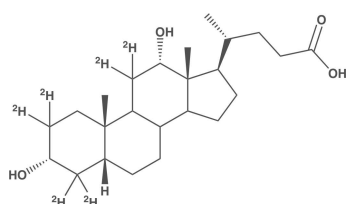
CATALOG #: S13227-0.1

CAS #: -

ISOTOPE: ≥98%

PURITY: ≥98%

1mL (100ug/mL)



Lithocholic Acid

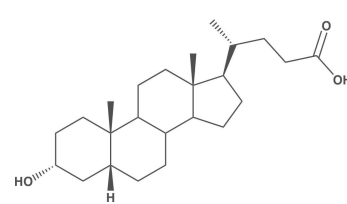
CATALOG #: 13099UNL

CAS #: 434-13-9

ISOTOPE: N/A

PURITY: ≥98%

50mg



Lithocholic Acid-[d4]

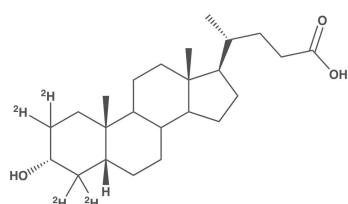
CATALOG #: 13099

CAS #: 83701-16-0

ISOTOPE: ≥98%

PURITY: ≥98%

50mg



Lithocholic Acid-[d4] (Solution)

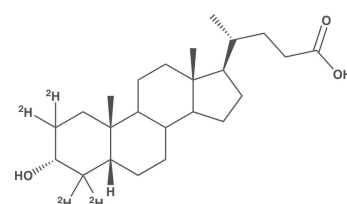
CATALOG #: S13099-0.1

CAS #: 83701-16-0

ISOTOPE: ≥98%

PURITY: ≥98%

1mL (100ug/mL)



BILE ACIDS

SECONDARY BILE ACIDS

Tauroursodeoxycholic Acid-[d4] Sodium Salt

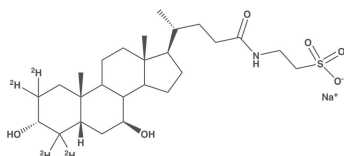
CATALOG #: 13106

CAS #: 14605-22-2

ISOTOPE: ≥98%

PURITY: ≥98%

10mg



Ursodeoxycholic Acid

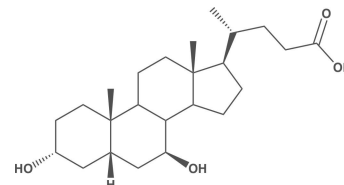
CATALOG #: 13102UNL

CAS #: 128-13-2

ISOTOPE: N/A

PURITY: ≥98%

50mg



Ursodeoxycholic Acid-[d4]

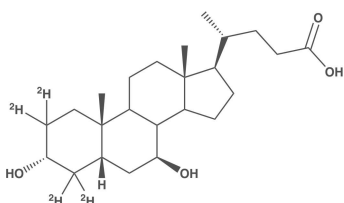
CATALOG #: 13102

CAS #: 347841-46-7

ISOTOPE: ≥98%

PURITY: ≥98%

50mg



Ursodeoxycholic acid-[d4] (Solution)

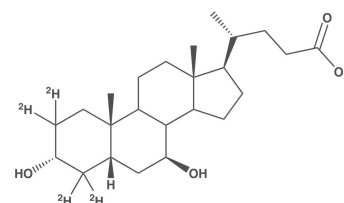
CATALOG #: S13102-0.1

CAS #: 347841-46-7

ISOTOPE: ≥98%

PURITY: ≥98%

1mL (100ug/mL)



BILE ACID CONJUGATES

Glycochenodeoxycholic Acid Sodium Salt

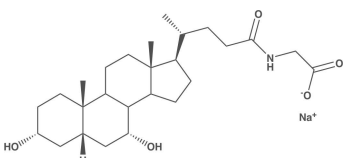
CATALOG #: 13104UNL

CAS #: 640-79-9

ISOTOPE: N/A

PURITY: ≥98%

10mg



Glycochenodeoxycholic Acid-[d4]

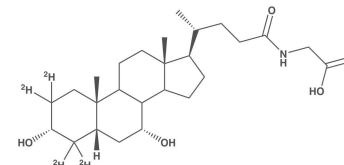
CATALOG #: 13104

CAS #: 1201918-16-2

ISOTOPE: ≥98%

PURITY: ≥97%

10mg



BILE ACIDS

BILE ACID CONJUGATES

Glycochenodeoxycholic Acid-[d9]

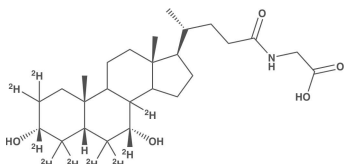
CATALOG #: 13108

CAS #: 640-79-9

ISOTOPE: $\geq 98\%$

PURITY: $\geq 97\%$

10mg



Glycochenodeoxycholic Acid-[d4] (Solution)

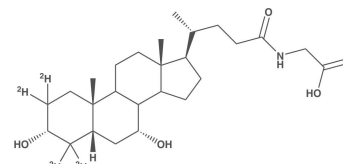
CATALOG #: S13104-0.1

CAS #: 1201918-16-2

ISOTOPE: $\geq 98\%$

PURITY: $\geq 97\%$

1mL (100ug/mL)



Glycochenodeoxycholic Acid-[d9] (Solution)

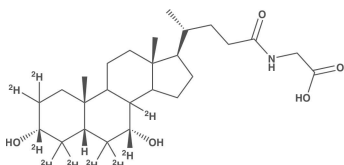
CATALOG #: S13108-0.1

CAS #: -

ISOTOPE: $\geq 98\%$

PURITY: $\geq 97\%$

1mL (100ug/mL)



Glycocholic Acid Hydrate

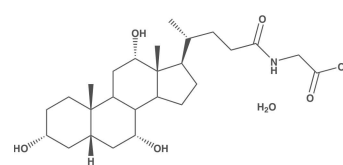
CATALOG #: 13443UNL

CAS #: 475-31-0

ISOTOPE: N/A

PURITY: $\geq 98\%$

50mg



Glycocholic Acid-[d4]

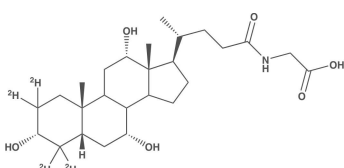
CATALOG #: 13443

CAS #: 1201918-15-1

ISOTOPE: $\geq 98\%$

PURITY: $\geq 98\%$

10mg



Glycocholic Acid-[d4] (Solution)

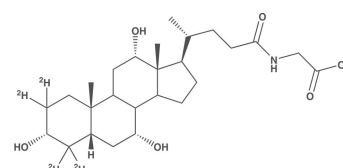
CATALOG #: S13443-0.1

CAS #: 1201918-15-1

ISOTOPE: $\geq 98\%$

PURITY: $\geq 98\%$

1mL (100ug/mL)



Glycodeoxycholic Acid Sodium Salt

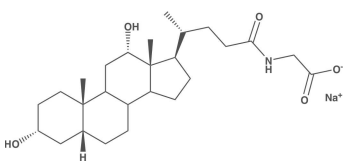
CATALOG #: 13226UNL

CAS #: 16409-34-0

ISOTOPE: N/A

PURITY: $\geq 98\%$

50mg



Glycodeoxycholic Acid-[d4]

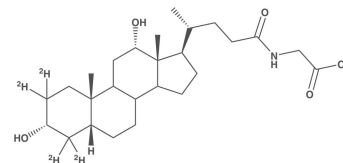
CATALOG #: 13226

CAS #: 1069132-37-1

ISOTOPE: $\geq 98\%$

PURITY: $\geq 98\%$

10mg



BILE ACIDS

BILE ACID CONJUGATES

Glycodeoxycholic Acid-[d6]

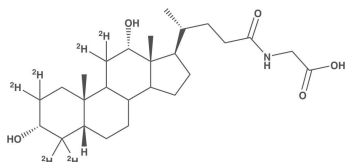
CATALOG #: 13229

CAS #: -

ISOTOPE: ≥98%

PURITY: ≥98%

10mg



Glycodeoxycholic Acid-[d4] (Solution)

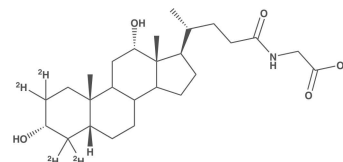
CATALOG #: S13226-0.1

CAS #: 1069132-37-1

ISOTOPE: ≥98%

PURITY: ≥98%

1mL (100ug/mL)



Glycodeoxycholic Acid-[d6] (Solution)

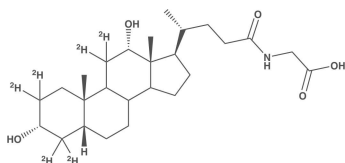
CATALOG #: S13229-0.1

CAS #: -

ISOTOPE: ≥98%

PURITY: ≥98%

1mL (100ug/mL)



Glycolithocholic Acid

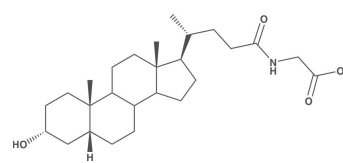
CATALOG #: 13231UNL

CAS #: 474-74-8

ISOTOPE: N/A

PURITY: ≥98%

50mg



Glycolithocholic Acid-[d4]

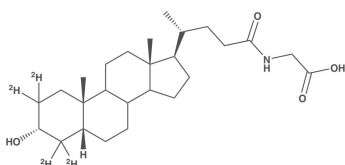
CATALOG #: 13231

CAS #: -

ISOTOPE: ≥98%

PURITY: ≥98%

10mg



Glycolithocholic Acid-[d4] (Solution)

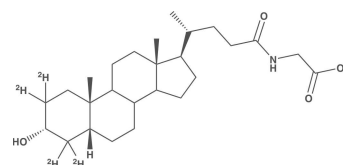
CATALOG #: S13231-0.1

CAS #: -

ISOTOPE: ≥98%

PURITY: ≥98%

1mL (100ug/mL)



Glycoursodeoxycholic Acid

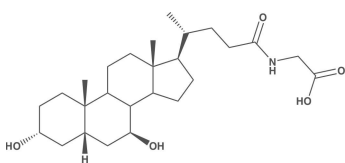
CATALOG #: 13224UNL

CAS #: 64480-66-6

ISOTOPE: N/A

PURITY: ≥98%

50mg



Glycoursodeoxycholic Acid-[d4]

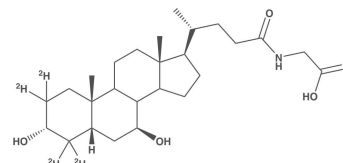
CATALOG #: 13224

CAS #: 64480-66-6

ISOTOPE: ≥98%

PURITY: ≥97%

10mg



BILE ACIDS

BILE ACID CONJUGATES

Glycoursodeoxycholic acid-[d4] (Solution)

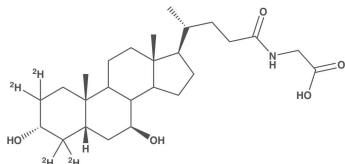
CATALOG #: S13224-0.1

CAS #: -

ISOTOPE: $\geq 98\%$

PURITY: $\geq 97\%$

1mL (100ug/mL)



Obeticholic Acid-[d4]

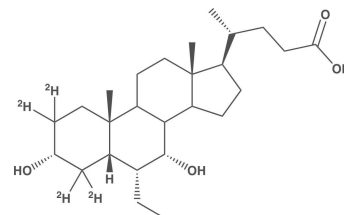
CATALOG #: 17140

CAS #: -

ISOTOPE: $\geq 98\%$

PURITY: $\geq 98\%$

1mg



Taurochenodeoxycholic Acid Sodium Salt

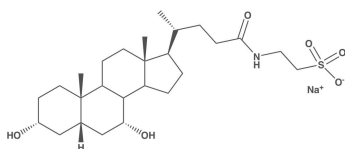
CATALOG #: 13105UNL

CAS #: 516-35-8

ISOTOPE: N/A

PURITY: $\geq 98\%$

50mg



Taurochenodeoxycholic Acid-[d4] Sodium Salt

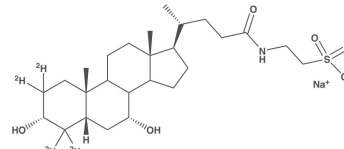
CATALOG #: 13105

CAS #: 6009-98-9

ISOTOPE: $\geq 98\%$

PURITY: $\geq 97\%$

10mg



Taurochenodeoxycholic Acid-[d9] Sodium Salt

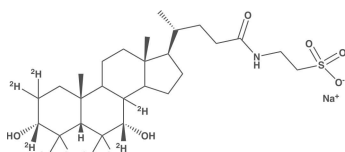
CATALOG #: 13107

CAS #: 6009-98-9

ISOTOPE: $\geq 98\%$

PURITY: $\geq 98\%$

5mg



Taurochenodeoxycholic Acid-[d4] Sodium Salt (Solution)

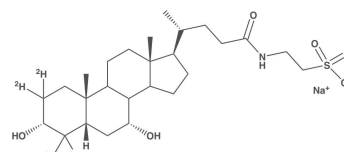
CATALOG #: S13105-0.1

CAS #: -

ISOTOPE: $\geq 98\%$

PURITY: $\geq 97\%$

1mL (100ug/mL)



Taurochenodeoxycholic Acid-[d9] Sodium Salt (Solution)

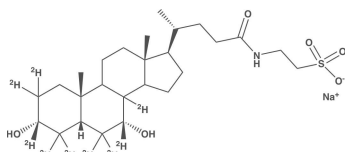
CATALOG #: S13107-0.1

CAS #: -

ISOTOPE: $\geq 98\%$

PURITY: $\geq 98\%$

1mL (100ug/mL)



Taurocholic Acid Sodium Salt Hydrate

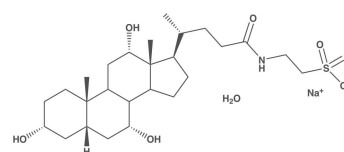
CATALOG #: 13232UNL

CAS #: 145-42-6

ISOTOPE: N/A

PURITY: $\geq 97\%$

50mg



BILE ACIDS

BILE ACID CONJUGATES

Taurocholic Acid-[d4] Sodium Salt

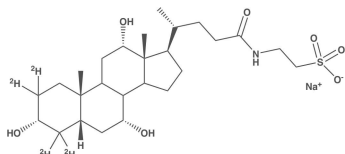
CATALOG #: 13232

CAS #: -

ISOTOPE: $\geq 98\%$

PURITY: $\geq 98\%$

10mg



Taurocholic Acid-[d4] Sodium Salt (Solution)

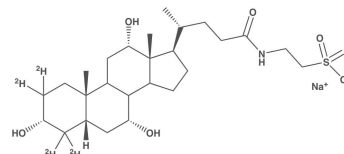
CATALOG #: S13232-0.1

CAS #: -

ISOTOPE: $\geq 98\%$

PURITY: $\geq 98\%$

1mL (100ug/mL)



Taurodeoxycholic Acid Sodium Salt Hydrate

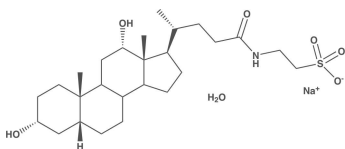
CATALOG #: 13225UNL

CAS #: 207737-97-1

ISOTOPE: N/A

PURITY: $\geq 98\%$

50mg



Taurodeoxycholic Acid-[d4] Sodium Salt

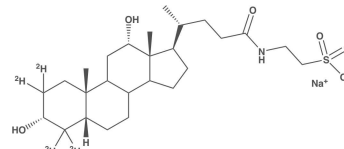
CATALOG #: 13225

CAS #: -

ISOTOPE: $\geq 98\%$

PURITY: $\geq 98\%$

10mg



Taurodeoxycholic Acid-[d6] Sodium Salt

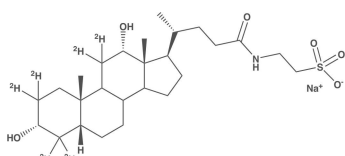
CATALOG #: 13228

CAS #: 207737-97-1

ISOTOPE: $\geq 98\%$

PURITY: $\geq 98\%$

5mg



Taurodeoxycholic Acid-[d4] Sodium Salt (Solution)

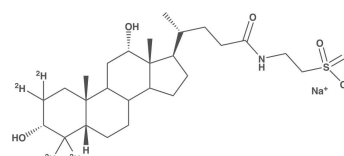
CATALOG #: S13225-0.1

CAS #: -

ISOTOPE: $\geq 98\%$

PURITY: $\geq 98\%$

1mL (100ug/mL)



Taurodeoxycholic Acid-[d6] Sodium Salt (Solution)

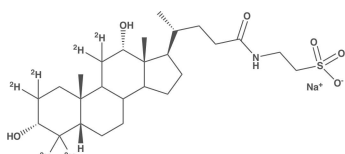
CATALOG #: S13228-0.1

CAS #: -

ISOTOPE: $\geq 98\%$

PURITY: $\geq 98\%$

1mL (100ug/mL)



Taurolithocholic Acid Sodium Salt

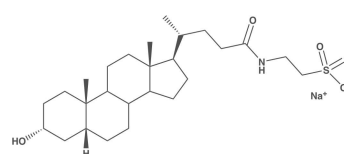
CATALOG #: 13230UNL

CAS #: 6042-32-6

ISOTOPE: N/A

PURITY: $\geq 98\%$

50mg



BILE ACIDS

BILE ACID CONJUGATES

Taurolithocholic Acid-[d4] Sodium Salt

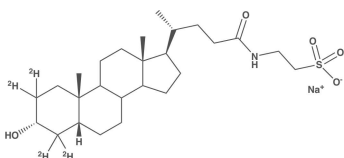
CATALOG #: 13230

CAS #: -

ISOTOPE: ≥98%

PURITY: ≥98%

10mg



Taurolithocholic Acid-[d4] Sodium Salt (Solution)

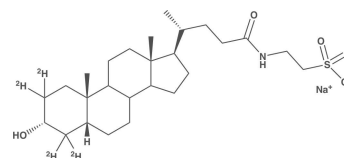
CATALOG #: S13230-0.1

CAS #: -

ISOTOPE: ≥98%

PURITY: ≥98%

1mL (100ug/mL)



Tauroursodeoxycholic Acid Dihydrate

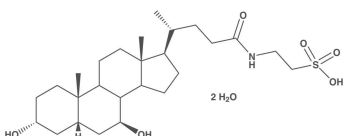
CATALOG #: 13106UNL

CAS #: 14605-22-2

ISOTOPE: N/A

PURITY: ≥98%

50mg



Tauroursodeoxycholic Acid-[d4] Sodium Salt (Solution)

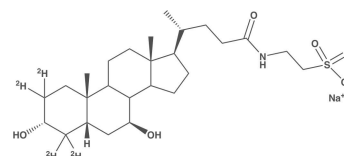
CATALOG #: S13106-0.1

CAS #: -

ISOTOPE: ≥98%

PURITY: ≥98%

1mL (100ug/mL)



BILE ACID SULFATES

Chenodeoxycholic Acid-[d4]-3-Sulfate

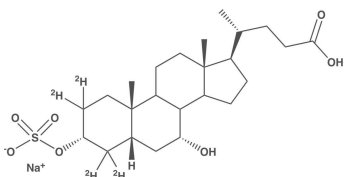
CATALOG #: 131013SO

CAS #: -

ISOTOPE: ≥98%

PURITY: ≥98%

1mg



Chenodeoxycholic Acid-3-Sulfate Sodium Salt

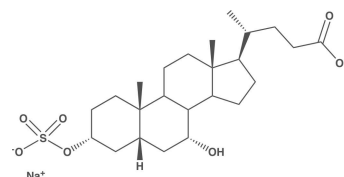
CATALOG #: 13101UNL3SO

CAS #: -

ISOTOPE: N/A

PURITY: ≥98%

1mg



Cholic Acid-[d4]-3-Sulfate Sodium Salt

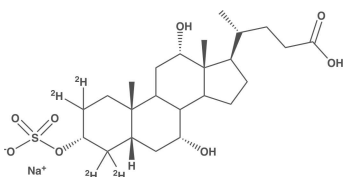
CATALOG #: 130983SO

CAS #: -

ISOTOPE: ≥98%

PURITY: ≥98%

1mg



Cholic Acid-3-Sulfate Sodium Salt

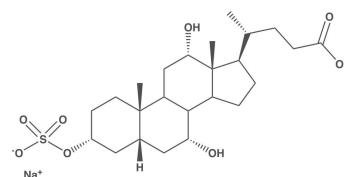
CATALOG #: 13098UNL3SO

CAS #: -

ISOTOPE: N/A

PURITY: ≥98%

1mg



BILE ACIDS

BILE ACID SULFATES

Deoxycholic Acid-[d4]-3-Sulfate Sodium Salt

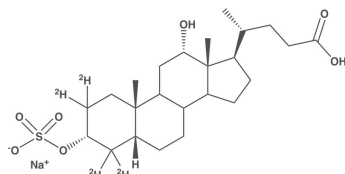
CATALOG #: 131003SO

CAS #: -

ISOTOPE: $\geq 98\%$

PURITY: $\geq 98\%$

1mg



Deoxycholic Acid-3-Sulfate Sodium Salt

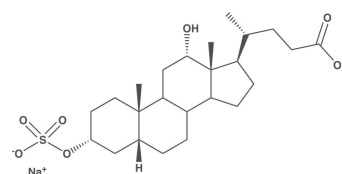
CATALOG #: 13100UNL3SO

CAS #: -

ISOTOPE: N/A

PURITY: $\geq 98\%$

1mg



Glycochenodeoxycholic Acid-[d4]-3-Sulfate Sodium Salt

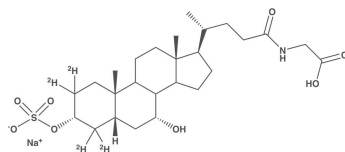
CATALOG #: 131043SO

CAS #: -

ISOTOPE: $\geq 98\%$

PURITY: $\geq 98\%$

1mg



Glycochenodeoxycholic Acid-3-Sulfate Sodium Salt

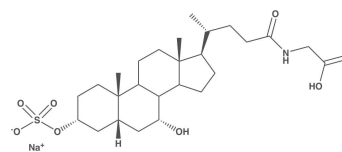
CATALOG #: 13104UNL3SO

CAS #: -

ISOTOPE: N/A

PURITY: $\geq 98\%$

1mg



Glycocholic Acid-[d4]-3-Sulfate Sodium Salt

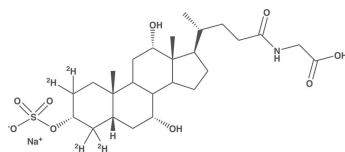
CATALOG #: 134433SO

CAS #: -

ISOTOPE: $\geq 98\%$

PURITY: $\geq 98\%$

1mg



Glycocholic Acid-3-Sulfate Sodium Salt

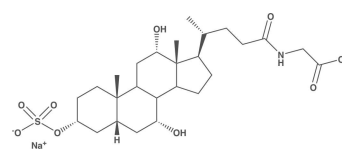
CATALOG #: 13443UNL3SO

CAS #: -

ISOTOPE: N/A

PURITY: $\geq 98\%$

1mg



Glycodeoxycholic Acid-[d4]-3-Sulfate Sodium Salt

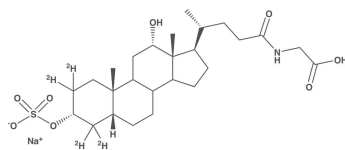
CATALOG #: 132263SO

CAS #: -

ISOTOPE: $\geq 98\%$

PURITY: $\geq 98\%$

1mg



Glycodeoxycholic Acid-3-Sulfate Sodium Salt

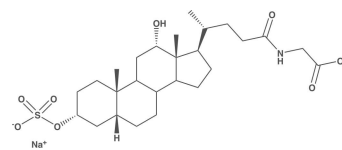
CATALOG #: 13226UNL3SO

CAS #: -

ISOTOPE: N/A

PURITY: $\geq 98\%$

1mg



BILE ACIDS

BILE ACID SULFATES

Glycolithocholic Acid-[d4]-3-Sulfate Sodium Salt

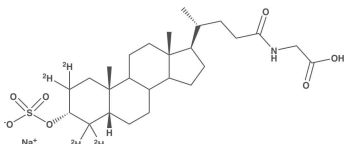
CATALOG #: 132313SO

CAS #: -

ISOTOPE: $\geq 98\%$

PURITY: $\geq 98\%$

1mg



Glycolithocholic Acid-3-Sulfate Sodium Salt

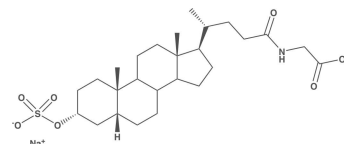
CATALOG #: 13231UNL3SO

CAS #: -

ISOTOPE: N/A

PURITY: $\geq 98\%$

1mg



Glycoursodeoxycholic Acid-[d4]-3-Sulfate Sodium Salt

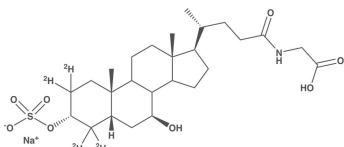
CATALOG #: 132243SO

CAS #: -

ISOTOPE: $\geq 98\%$

PURITY: $\geq 98\%$

1mg



Glycoursodeoxycholic Acid-3-Sulfate Sodium Salt

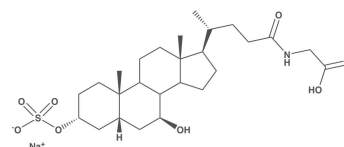
CATALOG #: 13224UNL3SO

CAS #: -

ISOTOPE: N/A

PURITY: $\geq 98\%$

1mg



Lithocholic Acid-[d4]-3-Sulfate Sodium Salt

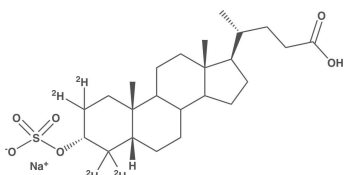
CATALOG #: 130993SO

CAS #: -

ISOTOPE: $\geq 98\%$

PURITY: $\geq 98\%$

1mg



Lithocholic Acid-3-Sulfate Sodium Salt

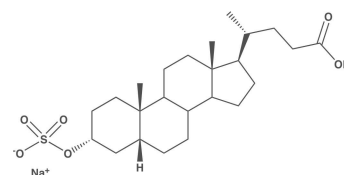
CATALOG #: 13099UNL3SO

CAS #: -

ISOTOPE: N/A

PURITY: $\geq 98\%$

1mg



Taurochenodeoxycholic Acid-[d4]-3-Sulfate Sodium Salt

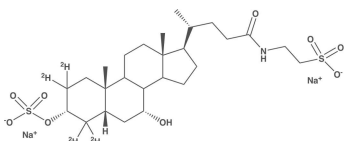
CATALOG #: 131053SO

CAS #: -

ISOTOPE: $\geq 98\%$

PURITY: $\geq 98\%$

1mg



Taurochenodeoxycholic Acid-3-Sulfate Sodium Salt

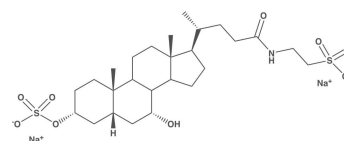
CATALOG #: 13105UNL3SO

CAS #: -

ISOTOPE: N/A

PURITY: $\geq 98\%$

1mg



BILE ACIDS

BILE ACID SULFATES

Taurocholic Acid-[d4]-3-Sulfate Sodium Salt

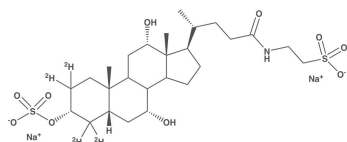
CATALOG #: 132323SO

CAS #: -

ISOTOPE: $\geq 98\%$

PURITY: $\geq 98\%$

1mg



Taurocholic Acid-3-Sulfate Sodium Salt

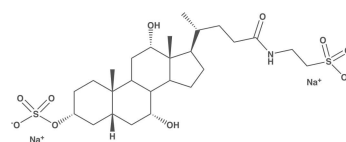
CATALOG #: 13232UNL3SO

CAS #: -

ISOTOPE: N/A

PURITY: $\geq 98\%$

1mg



Taurodeoxycholic Acid-[d4]-3-Sulfate Sodium Salt

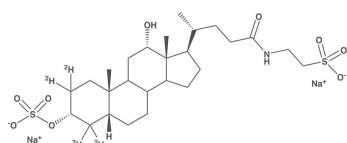
CATALOG #: 132253SO

CAS #: -

ISOTOPE: $\geq 98\%$

PURITY: $\geq 98\%$

1mg



Taurodeoxycholic Acid-3-Sulfate Sodium Salt

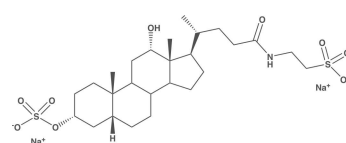
CATALOG #: 13225UNL3SO

CAS #: -

ISOTOPE: N/A

PURITY: $\geq 98\%$

1mg



Taurolithocholic Acid-[d4]-3-Sulfate Sodium Salt

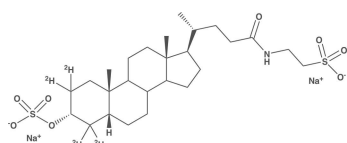
CATALOG #: 132303SO

CAS #: -

ISOTOPE: $\geq 98\%$

PURITY: $\geq 98\%$

1mg



Taurolithocholic Acid-3-Sulfate Sodium Salt

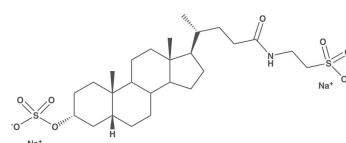
CATALOG #: 13230UNL3SO

CAS #: -

ISOTOPE: N/A

PURITY: $\geq 98\%$

1mg



Tauroursodeoxycholic Acid-[d4]-3-Sulfate Sodium Salt

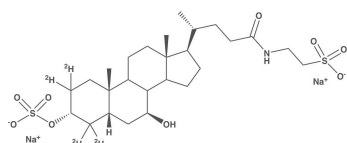
CATALOG #: 131063SO

CAS #: -

ISOTOPE: $\geq 98\%$

PURITY: $\geq 98\%$

1mg



Tauroursodeoxycholic Acid-3-Sulfate Sodium Salt

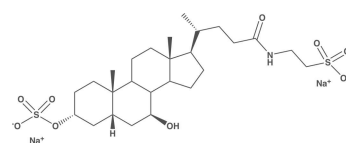
CATALOG #: 13106UNL3SO

CAS #: -

ISOTOPE: N/A

PURITY: $\geq 95\%$

1mg



BILE ACIDS

BILE ACID SULFATES

Ursodeoxycholic Acid-[d4]-3-Sulfate Sodium Salt

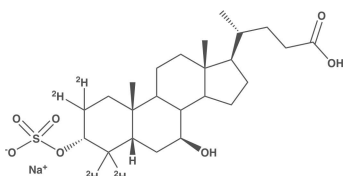
CATALOG #: 131023SO

CAS #: -

ISOTOPE: $\geq 98\%$

PURITY: $\geq 98\%$

1mg



Ursodeoxycholic Acid-3-Sulfate Sodium Salt

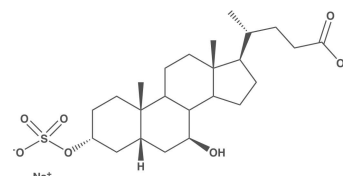
CATALOG #: 13102UNL3SO

CAS #: -

ISOTOPE: N/A

PURITY: $\geq 98\%$

1mg



MURICHOLIC ACIDS

α -Muricholic Acid

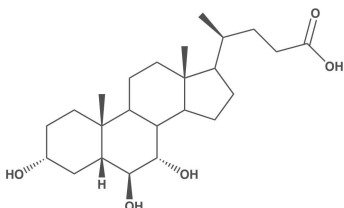
CATALOG #: 18011

CAS #: -

ISOTOPE: N/A

PURITY: $\geq 98\%$

1mg



β -Muricholic Acid

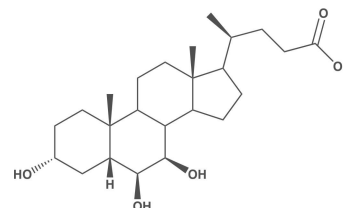
CATALOG #: 18010

CAS #: -

ISOTOPE: N/A

PURITY: $\geq 98\%$

1mg



γ -Muricholic Acid

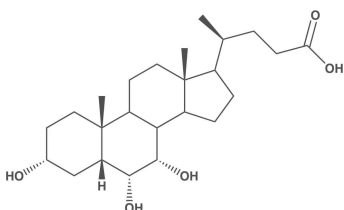
CATALOG #: 18012

CAS #: -

ISOTOPE: N/A

PURITY: $\geq 98\%$

1mg



ω -Muricholic Acid

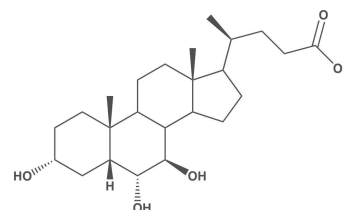
CATALOG #: 18015

CAS #: -

ISOTOPE: N/A

PURITY: $\geq 98\%$

1mg



α -Muricholic Acid-[d5]

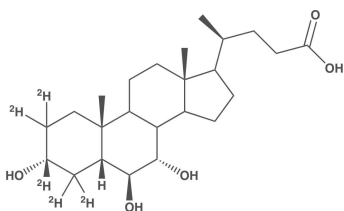
CATALOG #: 18035

CAS #: -

ISOTOPE: $\geq 99\%$

PURITY: $\geq 98\%$

1mg



β -Muricholic Acid-[d5]

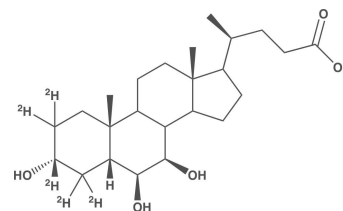
CATALOG #: 18034

CAS #: -

ISOTOPE: $\geq 99\%$

PURITY: $\geq 98\%$

1mg



BILE ACIDS

MURICHOLIC ACIDS

γ-Muricholic Acid-[d5]

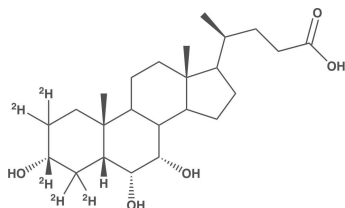
CATALOG #: 18036

CAS #: -

ISOTOPE: ≥99%

PURITY: ≥98%

1mg



ω-Muricholic Acid-[d5]

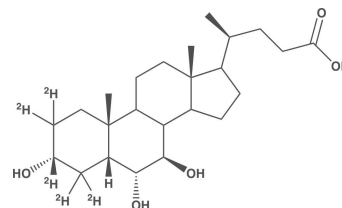
CATALOG #: 18037

CAS #: -

ISOTOPE: ≥99%

PURITY: ≥98%

1mg



Murideoxycholic Acid

CATALOG #: 17066

CAS #: 668-49-5

ISOTOPE: N/A

PURITY: ≥95%

1mg

